

101.11:
-2805-213-
24 P

TM 5-2805-213-24P

TECHNICAL MANUAL

**ORGANIZATIONAL, DIRECT SUPPORT AND
GENERAL SUPPORT MAINTENANCE
REPAIR PARTS AND SPECIAL TOOLS LIST
(INCLUDING DEPOT MAINTENANCE
REPAIR PARTS
AND SPECIAL TOOLS)**

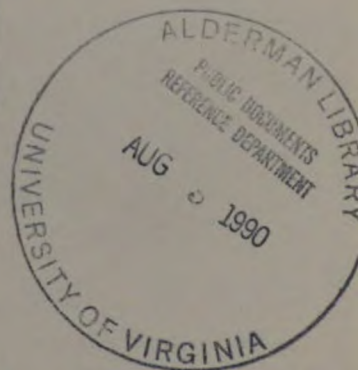
**ENGINE, GASOLINE, 14 HP
(MILITARY STANDARD MODEL A042)
USED ON TRUCK, PLATFORM,
(UTILITY 1/2 TON, 4 X 4, M274A2,
NSN 2805-00-017-8680**

UNIVERSITY OF VIRGINIA LIBRARY



X004815200

This copy is a reprint which includes current
pages from Change 1



HEADQUARTERS, DEPARTMENT OF THE ARMY



CHANGE }
NO. 1 }

HEADQUARTERS
DEPARTMENT OF THE ARMY
WASHINGTON, D.C., 7 November 1986

Organizational, Direct Support and
General Support Maintenance
Repair parts and Special Tools List
(Including Depot Maintenance
Repair Parts and Special Tools)

ENGINE, GASOLINE, 14 HP
(MILITARY STANDARD MODEL A042)
USED ON TRUCK, PLATFORM,
(UTILITY 1/2 TON, 4 X 4, M274A2)
NSN 2805-00-017-8680

TM 5-2805-213-24P, 13 February 1984, is changed as follows:

1. Remove and insert pages as indicated below. New or changed text material is indicated by a vertical bar in the margin. An illustration change is indicated by a miniature pointing hand.

Remove pages

Insert pages

37 and 38

37 and 38

2. Retain this sheet in front of manual for reference purposes.

By Order of the Secretary of the Army:

JOHN A. WICKHAM, JR.
General, United States Army
Chief of Staff

Official:

R. L. DILWORTH
Brigadier General, United States Army
The Adjutant General

DISTRIBUTION:

To be distributed in accordance with DA Form 12-25A, Organizational, Direct Support and General Support Maintenance requirements for Engine, Gasoline, 14 HP, Model A042

Technical Manual }
 No. 5-2805-213-24P }

HEADQUARTERS
 DEPARTMENT OF THE ARMY
 WASHINGTON, D.C., 28 February 1968

**ORGANIZATIONAL, DIRECT AND GENERAL SUPPORT MAINTENANCE
 REPAIR PARTS AND SPECIAL TOOLS LIST
 ENGINE, GASOLINE, 14 HP (MILITARY STANDARD MODEL
 A042) USED ON TRUCK, PLATFORM, UTILITY 1/2 TON,
 4 X 4, M274A2, NSN 2805-00-017-8680
 (INCLUDING DEPOT MAINTENANCE REPAIR PARTS AND SPECIAL TOOLS)**

REPORTING ERRORS AND RECOMMENDING IMPROVEMENTS

You can help improve this manual. If you find any mistake or if you know of a way to improve the procedures, please let us know. Mail your letter, DA Form 2028 (Recommended Changes to Publications and Blank Forms), or DA Form 2028-2 located in the back of this manual direct to: Commander, U. S. Army Troop Support Command, ATTN: DRSTR-MPSD, 4300 Goodfellow Boulevard, St. Louis, MO 63120. A reply will be furnished directly to you.

TABLE OF CONTENTS

			Figure	Page
Section	I	INTRODUCTION		1
	II	REPAIR PARTS LIST		7
Group	01	Fuel Pump and Filter Group	1	9
	02	Carburetor and Adapter Group	2	11
	03	Governor Group	3	13
	04	Ignition Group	4	15
	05	Oil Filler Tube Group	5	17
	06	Oil Filter Group	6	19
	07	Fan Drive Group	7	21
	08	Fan Assembly Group	8	23
	09	Starter Group	9	25
	10	Clutch Group	10	27
	11	Hourmeter Group	11	29
	12	Engine Shrouds Group	12	31
	13	Manifold, Exhaust Group	13	33
	14	Manifold, Intake Group	14	35
	15	Cylinder Head and Valve Group	15	37
	16	Oil Pan Group	16	39
	17	Piston and Connecting Rod Group	17	41
	18	Cover, Timing Gear Group	18	43
	19	Flywheel Housing Group	19	45
	20	Crankshaft and Camshaft Group	20	47
	21	Crankcase Assembly Group	21	49

*This manual supersedes TM 5-2805-213-24P, 28 February 1968.

TABLE OF CONTENTS - Continued

Section	III	SPECIAL TOOLS LIST (NOT APPLICABLE)...	
	IV	NATIONAL STOCK NUMBER AND PART NUMBER INDEX	51

ORGANIZATIONAL, DIRECT
AND GENERAL SUPPORT MAINTENANCE
REPAIR PARTS AND SPECIAL TOOLS LIST
(INCLUDING DEPOT MAINTENANCE REPAIR PARTS AND SPECIAL TOOLS)

Section I. INTRODUCTION

1. Scope.

This manual lists spares and repair parts; special tools; special test, measurement, and diagnostic equipment (TMDE), and other special support equipment required for performance of organizational and depot maintenance of the gasoline engine. It authorizes the requisitioning and issue of repair parts as indicated by the source and maintenance codes.

2. General.

This Repair Parts and Special Tools List is divided into the following sections:

a. Section II. Repair Parts List. A list of repair parts authorized for use in the performance of maintenance. The list also includes parts which must be removed for replacement of the authorized parts. Parts lists are composed of functional groups in numeric sequence, with the parts in each group listed in figure and item number sequence. Bulk materials are listed in NSN sequence.

b. Section III. Special Tools List. A list of special tools, special TMDE, and other special support equipment authorized for the performance of maintenance (Not Applicable.)

c. Section IV. National Stock Number and Part Number Index. A list, in National item identification number (NIIN) sequence, of all National stock numbers (NSN) appearing in the listings, followed by a list in alphameric sequence of all part numbers appearing in the listings. National stock numbers and part numbers are cross-referenced to each illustration figure and item number appearance. This index is followed by a cross-reference list of reference designators to figure and item numbers.

3. Explanation of Columns.

a. Illustration. This column is divided as follows:

(1) Figure Number. Indicates the figure number of the illustration of which the item is shown.

(2) Item Number. The number used to identify item called out in the illustration.

b. Source, Maintenance, and Recoverability (SMR) Codes.

(1) Source Code. Source codes indicate the manner of acquiring support items for maintenance, repair, or overhaul of end items. Source codes are entered in the first and second positions of the Uniform SMR Code format as follows:

Code	Definition
PA	- Item procured and stocked for anticipated or known usage.
PB	- Item procured and stocked for insurance purpose because essentiality dictates that a minimum quantity be available in the supply system.
PC	- Item procured and stocked and which otherwise would be coded PA except that it is deteriorative in nature.
PD	- Support item, excluding support equipment, procured for initial issue or outfitting and stocked only for subsequent or additional initial issues or outfittings. Not subject to automatic replenishment.
PE	- Support equipment procured and stocked for initial issue or outfitting to specified maintenance repair activities.
PF	- Support equipment which will not be stocked but which will be centrally procured on demand.
PG	- Item procured and stocked to provide for sustained support for the life of the equipment. It is applied to an item peculiar to the equipment which, because of probable discontinuance or shutdown of production facilities, would prove uneconomical to reproduce at a later time.
KD	- An item of a depot overhaul/repair kit and not purchased separately. Depot kit defined as a kit that provides items required at the time of overhaul or repair.
KF	- An item of a maintenance kit and not purchased separately. Maintenance kit defined as a kit that provides an item that can be replaced at organizational or intermediate levels of maintenance.
KB	- Item included in both a depot overhaul/repair kit and a maintenance kit.
MO	- Item to be manufactured or fabricated at organizational level.
MF	- Item to be manufactured or fabricated at the direct support maintenance level.
MH	- Item to be manufactured or fabricated at the general support maintenance level.
MD	- Item to be manufactured or fabricated at the depot maintenance level.
AO	- Item to be assembled at organizational level.
AF	- Item to be assembled at direct support maintenance level.
AH	- Item to be assembled at general support maintenance level.
AD	- Item to be assembled at depot maintenance level.
XA	- Item is not procured or stocked because the requirements for the item will result in the replacement of the next higher assembly.
XB	- Item is not procured or stocked. If not available through salvage, requisition.
XC	- Installation drawing, diagram, instruction sheet, field service drawing, that is identified by manufacturer's part number.
XD	- A support item that is not stocked. When required, item will be procured through normal supply channels.

NOTE

Cannibalization or salvage may be used as a source of supply for any items coded above except those coded XA and support items as restricted by AR 700-42.

(2) Maintenance Code. Maintenance codes are assigned to indicate the levels of maintenance authorized to USE and REPAIR support items. The maintenance codes are entered in the third and fourth positions of the Uniform SMR Code format as follows:

(a) The maintenance code entered in the third position will indicate the lowest maintenance level authorized to remove, replace, and use the support item. The maintenance code entered in the third position will indicate one of the following levels of maintenance:

Code	Application/Explanation
C	- Crew or operator maintenance performed within organizational maintenance.
O	- Support item is removed, replaced, used at the organizational level.
F	- Support item is removed, replaced, used at the direct support level.
H	- Support item is removed, replaced, used at the general support level.
D	- Support items that are removed, replaced, used at depot, mobile depot, or specialized repair activity only.

(b) The maintenance code entered in the fourth position indicates whether the item is to be repaired and identifies the lowest maintenance level with the capability to perform complete repair (i.e., all authorized maintenance functions). This position will contain one of the following maintenance codes.

Code	Application/Explanation
O	- The lowest maintenance level capable of complete repair of the support item is the organizational level.
F	- The lowest maintenance level capable of complete repair of the support item is the direct support level.
H	- The lowest maintenance level capable of complete repair of the support item is the general support level.
D	- The lowest maintenance level capable of complete repair of the support item is the depot level.
L	- Repair restricted to designated, Specialized Repair Activity.
Z	- Nonreparable. No repair is authorized.
B	- No repair is authorized. The item may be reconditioned by adjusting, lubricating, etc., at the user level. No parts or special tools are procured for the maintenance of this item.

(3) Recoverability Code. Recoverability codes are assigned to support items to indicate the disposition action on unserviceable items. The recoverability code is entered in the fifth position of the Uniform SMR Code format as follows:

Recoverability Codes	Definition
Z	- Nonreparable item. When unserviceable, condemn and dispose at the level indicated in position 3.
O	- Reparable item. When uneconomically reparable, condemn and dispose at organizational level.
F	- Reparable item. When uneconomically reparable, condemn and dispose at the direct support level.
H	- Reparable item. When uneconomically reparable, condemn and dispose at the general support level.
D	- Reparable item. When beyond lower level repair capability, return to depot. Condemnation and disposal not authorized below depot level.
L	- Reparable item. Repair, condemnation, and disposal not authorized below depot/specialized repair activity level.
A	- Item requires special handling or condemnation procedures because of specific reasons (i.e., precious metal content, high dollar value, critical material or hazardous material). Refer to appropriate manuals/directives for specific instructions.

c. National Stock Number. Indicates the National stock number assigned to the item and which will be used for requisitioning.

d. Part Number. Indicates the primary number used by the manufacturer (individual, company, firm, corporation, or Government activity), which control the design and characteristics of the item by means of its engineering drawings, specifications, standards, and inspection requirements to identify an item or range of items.

NOTE

When a stock numbered item is requisitioned, the item received may have a different part number than the part being replaced.

e. Federal Supply Code for Manufacturer (FSCM). The FSCM is a 5-digit numeric code listed in SB 708-42; which is used to identify the manufacturer, distributor, or Government agency, etc.

f. Description. Indicates the Federal item name and, if required, a minimum description to identify the items. Items that are included in kits and sets are listed below the name of the kit or set with the quantity of each item in the kit or set indicated in the quantity incorporated in unit column.

g. **Unit of Measure (U/M).** Indicates the standard of the basic quantity of the listed item as used in performing the actual maintenance function. This measure is expressed by a two-character alphabetical abbreviation (e.g., ea, in, pr, etc). When the unit of measure differs from the unit of issue, the lowest unit of issue that will satisfy the required units of measure will be requisitioned.

h. **Quantity Incorporated in Unit.** Indicates the quantity of the item used in the breakout shown on the illustration figure, which is prepared for functional group, subfunctional group, or an assembly. A "V" appearing in this column in lieu of a quantity indicates that no specific quantity is applicable, (e.g., shims, spacers, etc).

4. Special Information.

a. Repair parts kits and gasket sets appear as the last entries in the repair parts listing for the figure in which its parts are listed as repair parts.

b. The following publications pertain to the engine and its components.

TM 5-2805-213-14	Organizational, Direct Support and General Support Maintenance Manual
------------------	---

LC 5-2805-213-14	Lubrication Order.
------------------	--------------------

5. How to Locate Repair Parts.

a. **When National Stock Number or Part Number is Unknown:**

First Using the table of contents determine the assembly group within which the repair part belongs. This is necessary since illustrations are prepared for assembly groups, and listings are divided into the same groups.

Second Find the illustration covering the assembly group to which the repair part belongs.

Third Identify the repair part on the illustration and note the illustration figure number and item number of the repair part.

Fourth Using the repair parts listing, find the assembly group to which the repair part belongs and locate the illustration figure and item number noted on the illustration.

b. **When National Stock Number of Part Number is Known:**

(1) **First.** Using the Index of National Stock Numbers and Part Numbers, find the pertinent National stock number or part number. This index is in NIIN sequence followed by a list of part numbers in alphameric sequence, cross-referenced to the illustration figure number and item number.

(2) Second. After finding the figure and item number, locate the figure and item number in the repair parts list.

6. Abbreviations.

ASSY	assembly (ies)
DIA	diameter
EA	each
EXH	exhaust
HD	head (ed)
HEX	hexagon
HSG	housing (s)
MS	Military Standard
MTG	mounting
NO	number
THD	thread (ed) (s)
W/O	without

7. Index of Federal Supply Codes

Code	Manufacturer's
00000	Ordance Corps.
08288	Military Suppily Standards
12697	Clarostat Mfg. Co., Inc.
19207	Army Tank-Automotive Center
24617	General Motors Corp.
70040	A.C. Spark Plug Div., of General Motor Corp.
78480	Tillostson Mfg. Co.
81336	Corps of Engineers
82796	Fairbanks Morse Inc.
88044	Army Air Force Drawings
96906	Military Standards
97403	Engineer Research and Development Laboratories

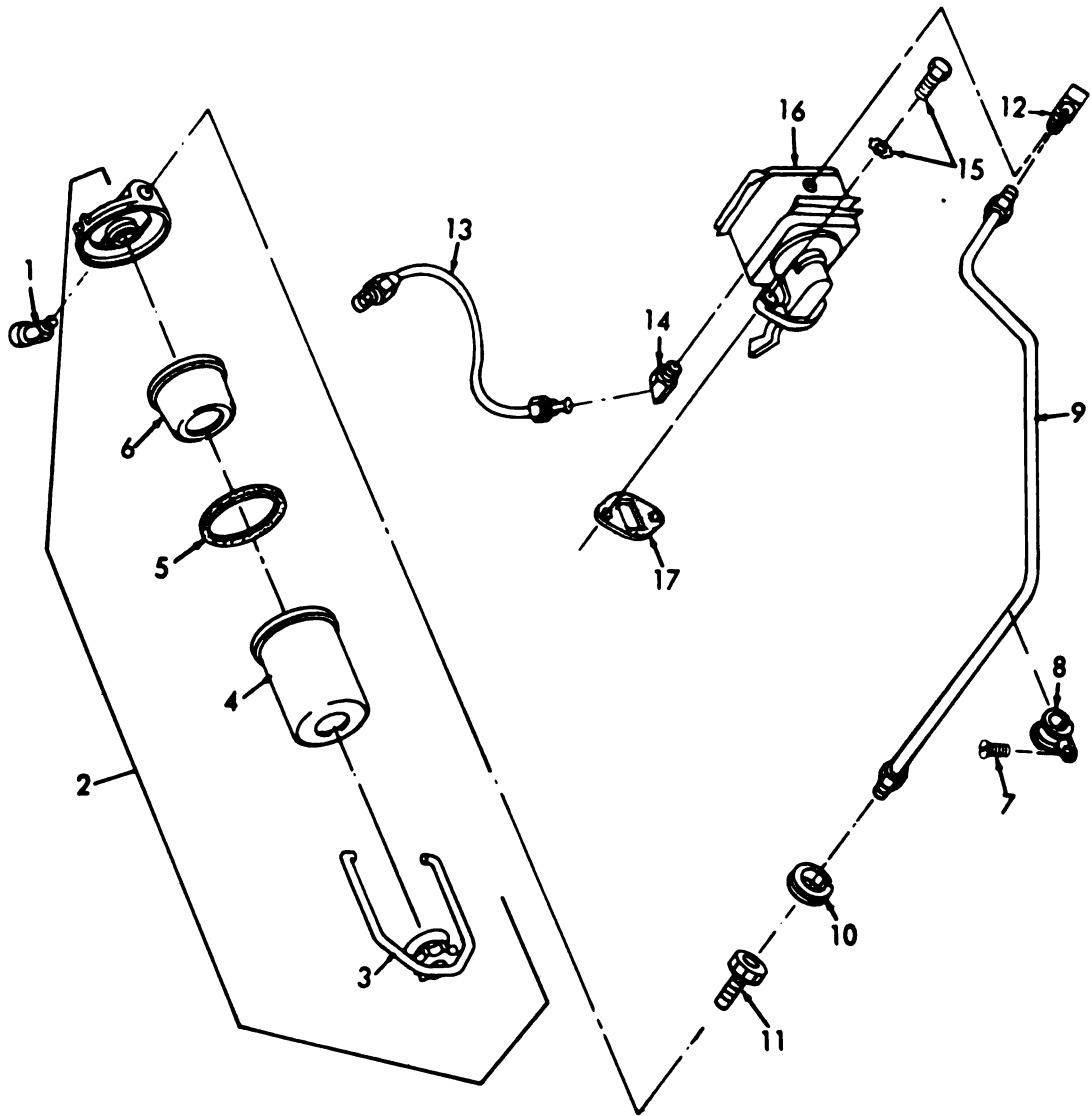


Figure No. 1 Fuel Pump and Filter Group

SECTION II

TM 5-2005-213-24P

(1) ILLUSTRATION		(2)	(3)	(4)	(5)	(6) DESCRIPTION	(7)	(8)
(a) FIG NO	(b) ITEM NO	SMR CODE	NATIONAL STOCK NUMBER	FSCM	PART NUMBER	USABLE ON CODE	U/M	QTY INC IN UNIT
GROUP 01 FUEL PUMP AND FILTER ASSEMBLY								
1	1	PAOZZ	4730-00-231-3905	88044	AN915-1	ELBOW, PIPE.....	EA	1
1	2	PAOZZ	2910-00-505-5201	97403	13215E3801	FILTER, FLUID, PRESSURE.....	EA	1
1	3	XBOZZ		24617	CF22	.BAIL, FILTER.....	EA	1
1	4	XBOZZ	2910-00-374-3580	24617	CF23	.BOWL, FUEL.....	EA	1
1	5	PAOZZ		70040	106	.GASKET, FUEL BOWL.....	EA	1
1	6	XBOZZ		70040	GF109	.ELEMENT, FILTER.....	EA	1
1	7	PAOZZ	5305-00-011-3998	96906	MS24641-62	SCREW, MACHINE, PART OF KIT P/N SK94.....	EA	1
1	8	XBOZZ		00000	CMDX2-3573030	CLAMP, LOOP.....	EA	1
1	9	PAOZZ	2590-00-570-2974	97403	10941311	TUBE ASSY, FUEL PUMP INLET.....	EA	1
1	10	PAOZZ	5325-00-174-9030	96906	MS35489-20	GROMMET, NONMETALLIC.....	EA	1
1	11	PAOZZ	4730-00-540-2612	24617	137405	ADAPTER, STRAIGHT.....	EA	1
1	12	PAOZZ	4730-00-277-8273	12204	CNEX4-137421	ELBOW, PIPE.....	EA	8
1	13	PAOZZ	4710-00-570-2973	19207	10941175	TUBE ASSEMBLY, METAL.....	EA	1
1	14	PAOZZ		97403	CNEX4-127829	ELBOW, PIPE.....	EA	1
1	15	PAOZZ	5305-00-017-9085	19207	10947213-1	SCREW, ASSEMBLED WASHER.....	EA	2
1	16	PAOZZ	2910-01-127-7368	97403	13215E4150	PUMP, FUEL.....	EA	1
1	17	PAOZZ	5330-00-756-1673	97403	13206E0401	GASKET, FUEL PUMP MOUNTING.....	EA	1

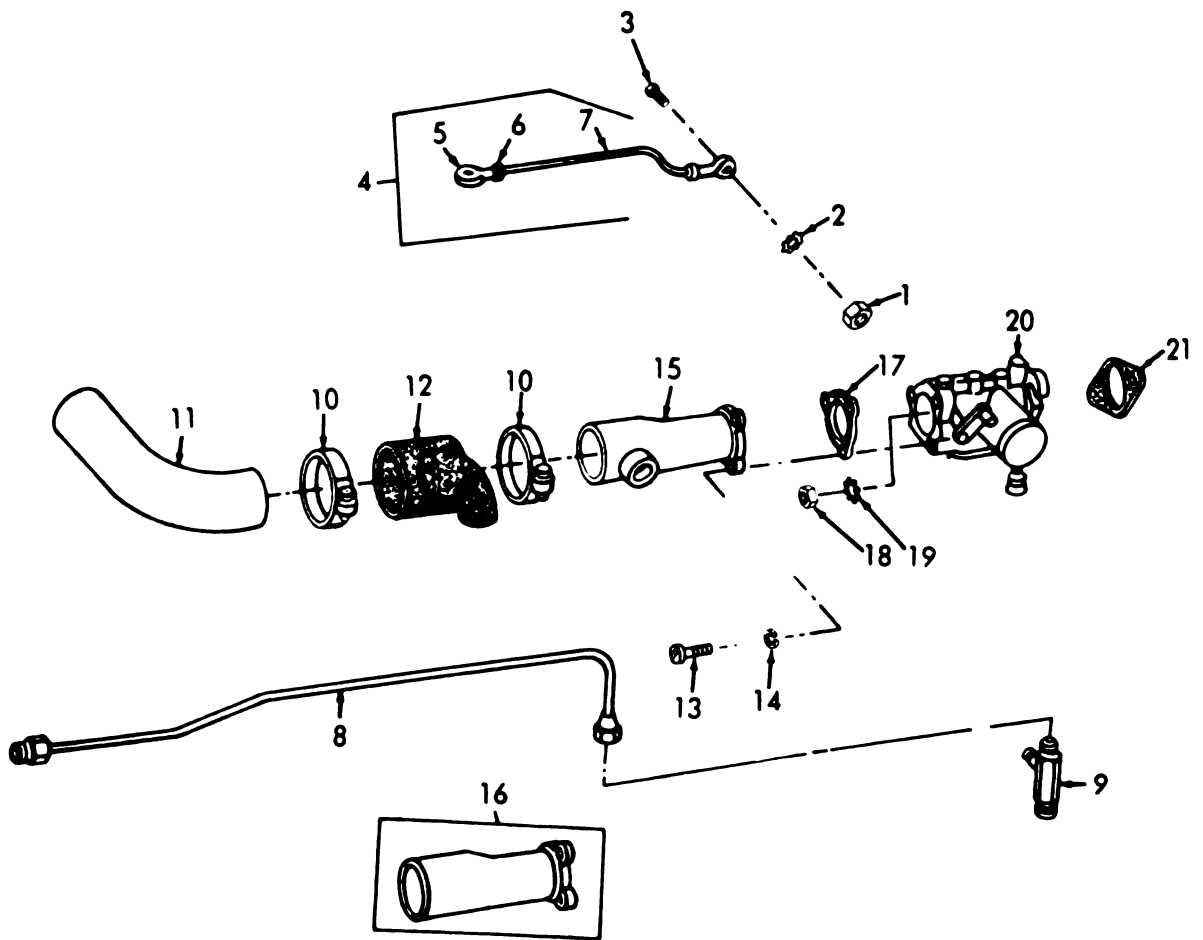


Figure No. 2 Carburetor And Adapter Group

SECTION II

TM 5-2805-213-24P

(1) ILLUSTRATION		(2)	(3)	(4)	(5)	(6)	(7)	(8)
(A) FIG NO	(B) ITEM NO	SMR CODE	NATIONAL STOCK NUMBER	FSCM	PART NUMBER	DESCRIPTION USABLE ON CODE	U/M	QTY INC IN UNIT
						GROUP 02 CARBURETOR AND ADAPTER ASSEMBLY		
2	1	PAOZZ	5310-00-934-9751	96906	MS35650-302	NUT, PLAIN, HEX HEAD.....	EA	2
2	2	PAOZZ	5310-00-576-5752	96906	MS35333-39	WASHER, LOCK.....	EA	1
2	3	PAOZZ	5305-00-087-0259	96906	MS9122-05	SCREW, MACHINE.....	EA	1
2	4	PAOZZ	2990-00-570-3076	19207	10941146	ROD ASSEMBLY, THROTTLE CONTROL.....	EA	1
2	5	PAOZZ	3120-00-570-3203	73134	HFJ3	.BEARING, PLAIN.....	EA	2
2	6	PAOZZ	5310-00-934-9751	96906	MS35650-102	.NUT, PLAIN, HEX HEAD.....	EA	2
2	7	XAOZZ		00000	BQX1-583871	.ROD, THROTTLE CONTROL.....	EA	1
2	8	PAOZZ	2590-00-570-2970	97403	10941176	TUBE, ASSEMBLY, CARBURETOR VENT.....	EA	1
2	9	PAOZZ	4730-00-921-6203	19207	10941239	TEE, TUBE.....	EA	1
2	10	PAOZZ	4730-00-909-8627	96906	MS35842-13	CLAMP, HOSE.....	EA	2
2	11	PAOZZ	4710-00-832-5679	97403	13215E3756	TUBE, CARBURETOR AIR INLET.....	EA	1
2	12	PAOZZ	2910-00-832-5678	97403	13215E3758	CONNECTOR, FLEXIBLE, CARBURETOR INLET TUBE.....	EA	1
2	13	PAOZZ	5305-00-978-9379	96906	MS35457-34	SCREW.....	EA	3
2	14	PAOZZ	5310-00-550-1130	96906	MS35333-23	WASHER, LOCK.....	EA	3
2	15	XBOZZ		19207	10919460	ADAPTER, AIR INLET.....	EA	1
2	16	PAOZZ	2910-00-832-5676	97403	13215E3757	ADAPTER, AIR INLET.....	EA	1
2	17	XAOZZ		00000	10941166	GASKET, AIR INLET MOUNTING..... PART OF KIT P/N 5703462.....	EA	1
2	18	PAOZZ	5310-00-660-3381	96906	MS20364-524	NUT, SELF-LOCKING.....	EA	2
2	19	PAOZZ	5310-00-167-0836	88044	AN960-516L	WASHER, FLAT.....	EA	2
2	20	PAOZZ	2910-00-570-3045	19207	10941165	CARBURETOR, FLOAT.....	EA	1
2	21	PAOZZ	5330-00-017-8771	19207	10919461	GASKET, CARBURETOR MTG, PART OF KIT P/N 5703462.....	EA	1

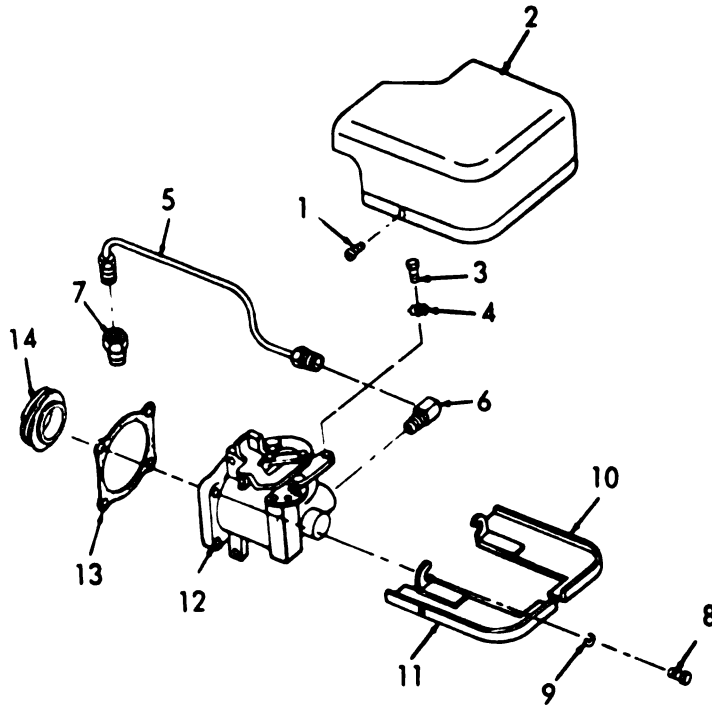


Figure No. 3 Governor Group

SECTION II

TM 5-2805-213-24P

(1) ILLUSTRATION		(2)	(3)	(4)	(5)	(6)	(7)	(8)
(a) FIG NO	(b) ITEM NO	SMR CODE	NATIONAL STOCK NUMBER	FSCM	PART NUMBER	DESCRIPTION	USABLE ON CODE	QTY INC IN UNIT
						GROUP 03 GOVERNOR ASSEMBLY		
3	1	PAOZZ	5305-00-057-9610	96906	MS24641-34	SCREW, ASSEMBLED WASHER.....	EA	4
3	2	XBOZZ	2805-00-449-0436	19207	10941182	SHROUD, GOVERNOR.....	EA	1
3	3	PAOZZ	5305-00-857-5867	96906	MS9122-03	SCREW, MACHINE.....	EA	1
3	4	PAOZZ	5310-00-576-5752	96906	MS35333-22	WASHER.....	EA	1
3	5	XBOZZ		19207	10941294	LINE ASSEMBLY, OIL, GOVERNOR.....	EA	1
3	6	PAOZZ	4730-00-277-8641	19207	CNEX4-137419	ELBOW, PIPE.....	EA	1
3	7	XBOZZ		19207	CNEX4-137403	ADAPTER, PIPE.....	EA	1
3	8	PAOZZ	5305-00-286-1497	21450	BQUX1-583871	SCREW, MACHINE.....	EA	2
3	9	PAOZZ	5310-00-209-0786	96906	MS35335-19	WASHER, LOCK.....	EA	4
3	10	XBOZZ		00000	10941236-1	RETAINER ASSEMBLY, GOVERNOR SHROUD.....	EA	1
3	11	XBOZZ		00000	10941236-2	RETAINER ASSEMBLY, GOVERNOR SHROUD.....	EA	1
3	12	PAOZZ	2990-00-570-3080	77260	GCS-3	GOVERNOR, GASOLINE.....	EA	1
3	13	KFOZZ		97403	13206E0184	GASKET, GOVERNOR MTG, PART OF KIT P/N 5703462.....	EA	1
3	14	PAFZZ	3020-00-570-2904	97403	13206E0792	GEAR, DRIVE, HOURMETER.....	EA	1

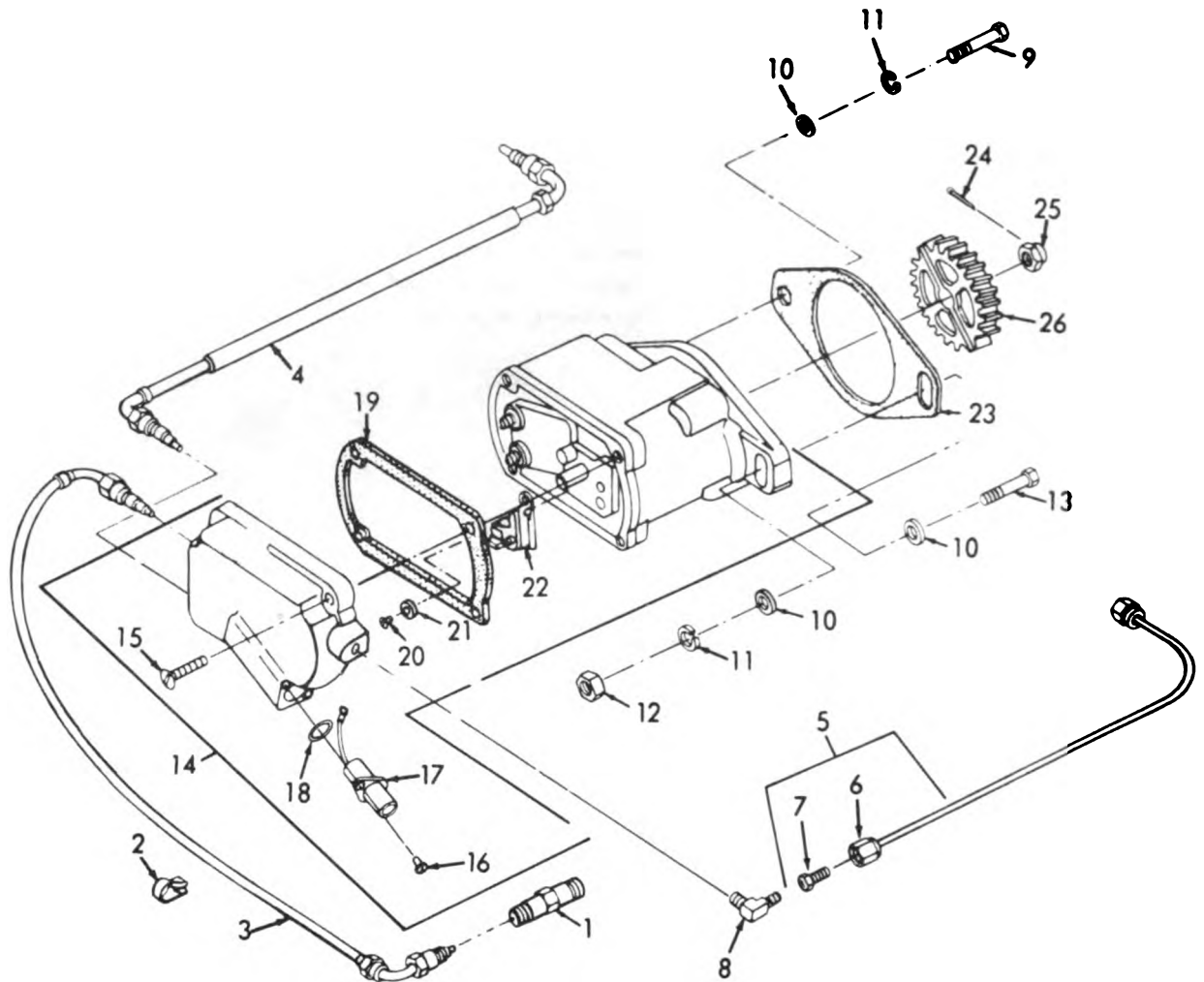


Figure No. 4 Ignition Group

SECTION II

TM 5-2805-213-24P

(1) ILLUSTRATION		(2)	(3)	(4)	(5)	(6)	(7)	(8)
(a) FIG NO	(b) ITEM NO	SMR CODE	NATIONAL STOCK NUMBER	FSCM	PART NUMBER	DESCRIPTION USABLE ON CODE	U/M	QTY INC IN UNIT
GROUP 04 IGNITION ASSEMBLY								
4	1	PAOZZ	2920-00-810-7083	96906	MS51009-3	SPARK PLUG.....	EA	2
4	2	XBOZZ	5340-00-570-2931	19207	8738123	CLAMP, LOOP.....	EA	1
4	3	PAOZZ	6150-00-570-2938	02978	10941169-1	CONDUIT ASSEMBLY, SPARK PLUG NO1.....	EA	1
4	4	PAOZZ	6150-00-570-2943	19207	10941169-2	LEAD ASSY, SPARK PLUG NO2.....	EA	1
4	5	PAOZZ		00000	10941222	TUBE, MAGNETO BREATHER.....	EA	1
4	6	PAOZZ	4730-00-067-9801	96906	MS39176-1	.NUT.....	EA	2
4	7	PAOZZ		96906	MS39177-1	.SLEEVE.....	EA	2
4	8	PAOZZ		96906	MS39171-1	ELBOW, PIPE.....	EA	1
4	9	PAOZZ	5305-00-269-3219	96906	MS90725-69	SCREW, CAP, HEX HEAD.....	EA	1
4	10	PAOZZ	5310-00-080-6004	96906	MS27183-14	WASHER, FLAT.....	EA	3
4	11	PAOZZ		96906	MS35338-46	WASHER, LOCK.....	EA	2
4	12	PAOZZ	5310-00-732-0558	96906	MS35690-602	NUT, PLAIN, HEX HEAD.....	EA	1
4	13	PAOZZ	5305-00-269-3217	96906	MS90725-67	SCREW, CAP, HEX HEAD.....	EA	1
4	14	PAOZZ	2920-00-570-3061	97403	10941241	MAGNETO.....	EA	1
4	15	KFOZZ		82796	10S12NE	.SCREW, END, CAP, PART OF KIT P/N SK94.....	EA	4
4	16	PAOZZ	5305-00-751-8655	82796	885U	.SCREW, ASSEMBLED WASHER.....	EA	1
4	17	KFOZZ		82796	VX2433	.CONDENSER.....	EA	1
4	18	KFOZZ		82796	P2473	.PACKING, PREFORMED.....	EA	1
4	19	KFOZZ		82796	U2498	.GASKET, PART OF KIT P/N SK94.....	EA	1
4	20	XDOZZ	5305-00-616-6013	82796	686U	.SCREW, ASSEMBLED WASHER.....	EA	1
4	21	PAOZZ	5310-00-221-3153	82796	85969	.WASHER, FLAT.....	EA	2
4	22	KFOZZ		82796	Q2437A	.CONTACT ASSEMBLY, PART OF KIT P/N SK94.....	EA	1
4	23	PAOZZ	5330-00-251-2117	97403	13215E4166	GASKET, MAGNETO MOUNTING.....	EA	1
4	24	PAOZZ	5315-00-234-1854	96906	MS24665-53	PIN, COTTER.....	EA	1
4	25	PAOZZ	5310-00-737-2632	82796	M2570	NUT, PLAIN, CASTELLATED.....	EA	1
4	26	PAOZZ	2920-00-999-6887	97403	13206E0900	GEAR ASSEMBLY, MAGNETO.....	EA	1
4	7	PAOZZ	2920-00-871-8366	82796	SK94	PARTS KIT, IGNITION.....	EA	1
4	15					SCREW, MACHINE	EA	1
4	19					SCREW, END, CAP	EA	4
4	22					GASKET	EA	1
4						CONTACT ASSEMBLY	EA	1

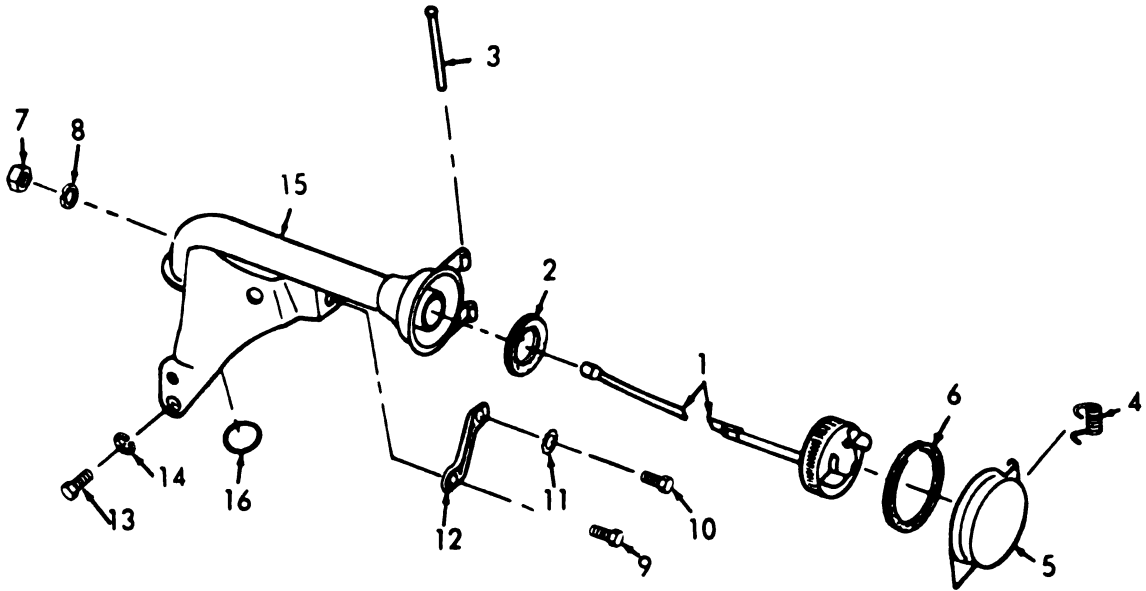


Figure No. 5 Oil Filler Tube Group

SECTION II

TM 5-2805-213-24P

(1) ILLUSTRATION		(2)	(3)	(4)	(5)	(6)	(7)	(8)
(B) FIG NO	(D) ITEM NO	SMR CODE	NATIONAL STOCK NUMBER	FSCM	PART NUMBER	DESCRIPTION	USABLE ON CODE	QTY INC IN UNIT
						GROUP 5 OIL FILLER TUBE GROUP		
5	1	PAOZZ	6680-00-832-5683	19207	10941253	CAP-ROD ASSY, LIQUID, OIL LEVEL GAGE.....	EA	1
5	2	PAOZZ		19207	10941260	.GASKET, PART OF KIT P/N 5703462.....	EA	1
5	3	XBOZZ		00000	BFDX4-1505581	PIN, FILLER TUBE COVER HINGE.....	EA	1
5	4	XBOZZ	5360-00-921-6200	19207	10941193	SPRING, HELICAL.....	EA	1
5	5	XBOZZ		00000	10941218	COVER ASSY, OIL FILLER TUBE.....	EA	1
5	6	KFOZZ		00000	10941229	GASKET, PART OF KIT P/N 5703462.....	EA	1
5	7	PAOZZ	5310-00-880-7746	96906	MS35690-525	NUT, PLAIN, HEX HEAD.....	EA	1
5	8	PAOZZ	5310-00-514-6674	96906	MS35335-34	WASHER, LOCK.....	EA	1
5	9	PAOZZ	5306-00-225-9084	96906	MS90726-29	BOLT, MACHINE.....	EA	1
5	10	PAOZZ	5305-00-068-0501	96906	MS90725-5	SCREW, CAP, HEX HEAD.....	EA	2
5	11	PAOZZ	5310-00-209-0786	96906	MS35335-33	WASHER, LOCK.....	EA	1
5	12	XBOZZ		00000	10941204	BRACKET, OIL FILLER TUBE.....	EA	1
5	13	PAOZZ	5306-00-225-8497	96906	MS90725-32	BOLT, MACHINE.....	EA	2
5	14	PAOZZ	5310-00-514-6674	96906	MS35335-34	WASHER, LOCK.....	EA	1
5	15	XBOZZ		00000	10941245	TUBE ASSY, OIL FILLER.....	EA	1
5	16	KFOZZ		00000	10946958-3	O-RING, OIL FILLER TUBE MTG, PART OF KIT P/N 5703462.....	EA	1

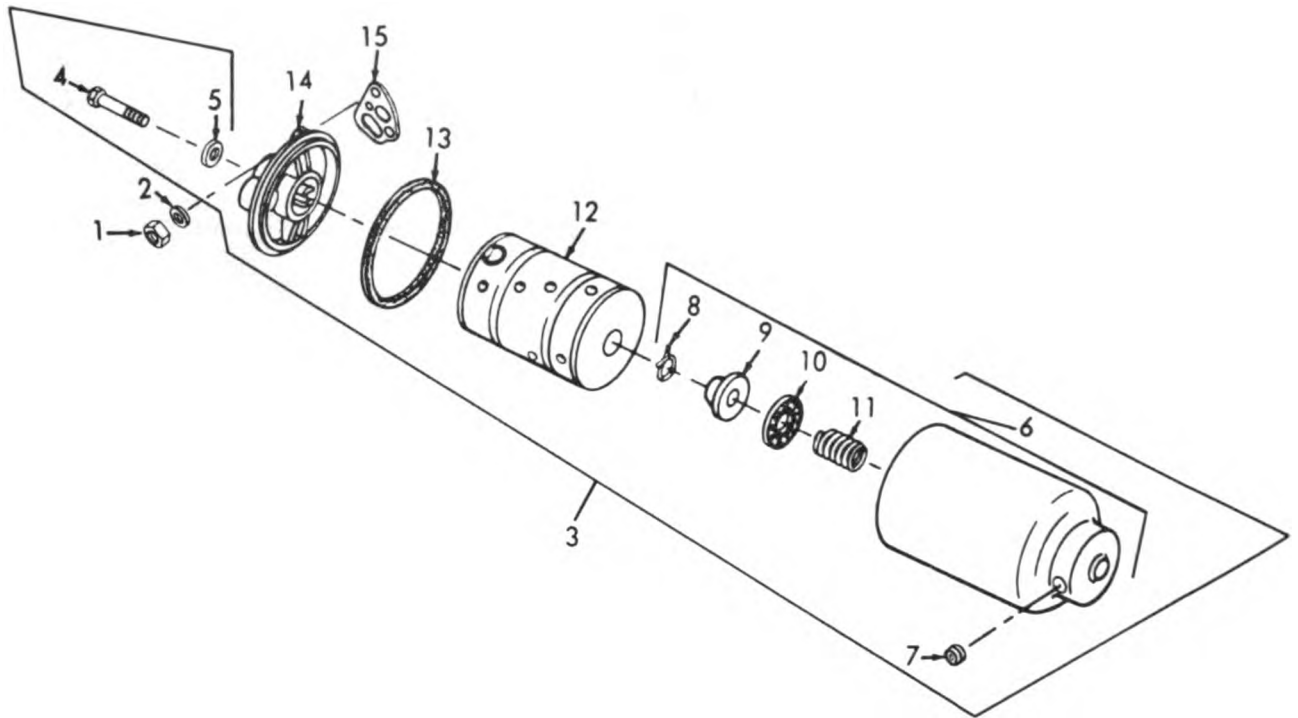


Figure No. 6 Oil Filter Group

SECTION II

TM 5-2805-213-2AP

(1) ILLUSTRATION		(2)	(3)	(4)	(5)	(6) DESCRIPTION	(7)	(8)
(B) FIG NO	(D) ITEM NO	SMR CODE	NATIONAL STOCK NUMBER	FSCM	PART NUMBER	USABLE ON CODE	U/M	QTY INC IN UNIT
						GROUP 06 OIL FILTER ASSEMBLY		
6	1	PAOZZ	5310-00-298-2747	96906	MS20500-428	NUT, SELF-LOCKING.....	EA	3
6	2	PAOZZ	5310-00-803-4058	96906	MS27183-10	WASHER, FLAT.....	EA	3
6	3	PBOZZ	2940-00-867-8806	97403	13206E0160	FILTER, FLUID, PRESSURE.....	EA	1
6	4	PAOZZ	5306-00-226-4834	96906	MS90725-41	.BOLT, MACHINE.....	EA	1
6	5	PAOZZ	5330-00-752-7750	96906	MS35769-4	.GASKET, COVER RETAINING BOLT.....	EA	1
6	6	XBOZZ	2940-00-781-4307	97403	13215E4168	.PARTS KIT, FLUID, PRESSURE.....	EA	1
6	7	XBOZZ	4730-00-018-9566	96906	MS49005-2	..PLUG, PIPE.....	EA	1
6	8	XBOZZ	5365-00-867-8808	97403	13206E0168	..RETAINER, CENTERING SEAL.....	EA	1
6	9	PAOZZ	5330-00-073-3036	97403	13206E0167	..PACKING, PREFORMED.....	EA	1
6	10	XBOZZ	5310-00-789-0961	97403	13206E0166	..WASHER, FLAT.....	EA	1
6	11	XBOZZ	5360-00-867-8807	97403	13206E0165	..SPRING, HELICAL.....	EA	1
6	12	PAOZZ	2940-00-580-6302	96906	MS35802-1	.FILTER, ELEMENT, FLUID, OIL FILTER SHELL.....	EA	1
6	13	XAOZZ		96906	MS35802	..GASKET, PART OF OIL FILTER ELEMENT NSN 2940-00-580-6302....	EA	1
6	14	PBOZZ		97403	13206E0171	.COVER, OIL FILTER.....	EA	1
6	15	KFOZZ		97403	13206E0177	GASKET, PART OF KIT P/N 5703462.....	EA	1

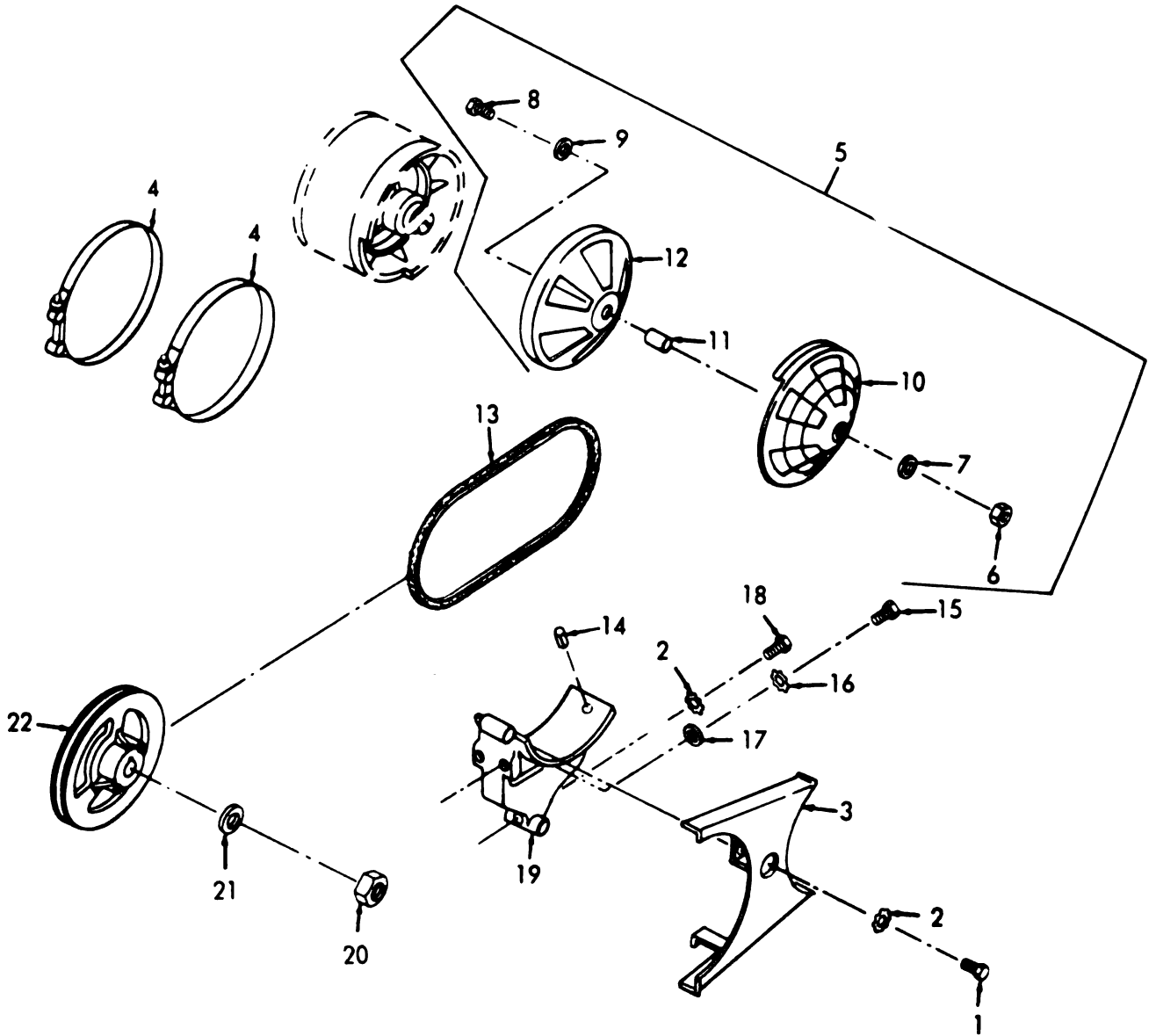


Figure No. 7 Fan Drive Group

SECTION II

TM 5-2805-213-24P

(1) ILLUSTRATION		(2)	(3)	(4)	(5)	(6) DESCRIPTION	(7)	(8)
(a) FIG NO	(b) ITEM NO	SMR CODE	NATIONAL STOCK NUMBER	FSCM	PART NUMBER	USABLE ON CODE	U/M	QTY INC IN UNIT
						GROUP 07 FAN DRIVE ASSEMBLY		
7	1	PAOZZ	5305-00-068-0502	96906	MS90725-6	SCREW, CAP, HEX HEAD.....	EA	2
7	2	PAOZZ	5310-00-514-6674	96906	MS35335-34	WASHER, LOCK.....	EA	2
7	3	XBOZZ		00000	10919379	GUARD ASSEMBLY, FAN BELT.....	EA	1
7	4	PAOZZ	5340-00-570-2931	19207	8738123	CLAMP ASSEMBLY, FAN HOUSING TO BRACKET MTG.....	EA	2
7	5	XBOZZ		97403	10941223	LOUVER ASSY, FAN HOUSING INTAKE.....	EA	1
7	6	PAOZZ	5310-00-903-8282	96906	MS21083N4	.NUT, SELF-LOCKING.....	EA	1
7	7	PAOZZ	5310-00-809-4058	96906	MS27183-10	.WASHER, FLAT.....	EA	1
7	8	XDOZZ	5305-00-068-0514	96906	MS90726-7	.SCREW, CAP, HEX HEAD.....	EA	1
7	9	PAOZZ		19207	10941233	.WASHER, FLAT, SPRING.....	EA	1
7	10	XBOZZ		00000	10941224	.LOUVER ASSY.....	EA	1
7	11	XBOZZ		00000	10941231	.SPACER.....	EA	1
7	12	XBOZZ		97403	10941225	.LOUVER ASSEMBLY, INNER.....	EA	1
7	13	PAOZZ	3030-00-570-2919	19207	10946807	BELT, V.....	EA	1
7	14	PAOZZ	5315-00-844-3663	96906	MS9048-230	PIN, SPRING.....	EA	1
7	15	PAOZZ	5305-00-225-3839	96906	MS90725-8	SCREW, CAP, HEX HEAD.....	EA	1
7	16	PAOZZ	5310-00-209-0786	96906	MS35335-33	WASHER, LOCK.....	EA	1
7	17	PAOZZ	5310-00-809-4058	96906	MS27183-10	WASHER, FLAT.....	EA	1
7	18	PAOZZ	5306-00-225-8500	96906	MS90725-35	BOLT, MACHINE.....	EA	3
7	19	XBOZZ		19207	10919366	BRACKET, FAN HOUSING.....	EA	1
7	20	PAOZZ	5310-00-763-8905	96906	MS35690-1022	NUT, PLAIN, HEX HEAD.....	EA	1
7	21	PAOZZ		00000	BEBX1-131016	WASHER.....	EA	1
7	22	XBOZZ		00000	10919367	PULLEY, FAN DRIVE.....	EA	1

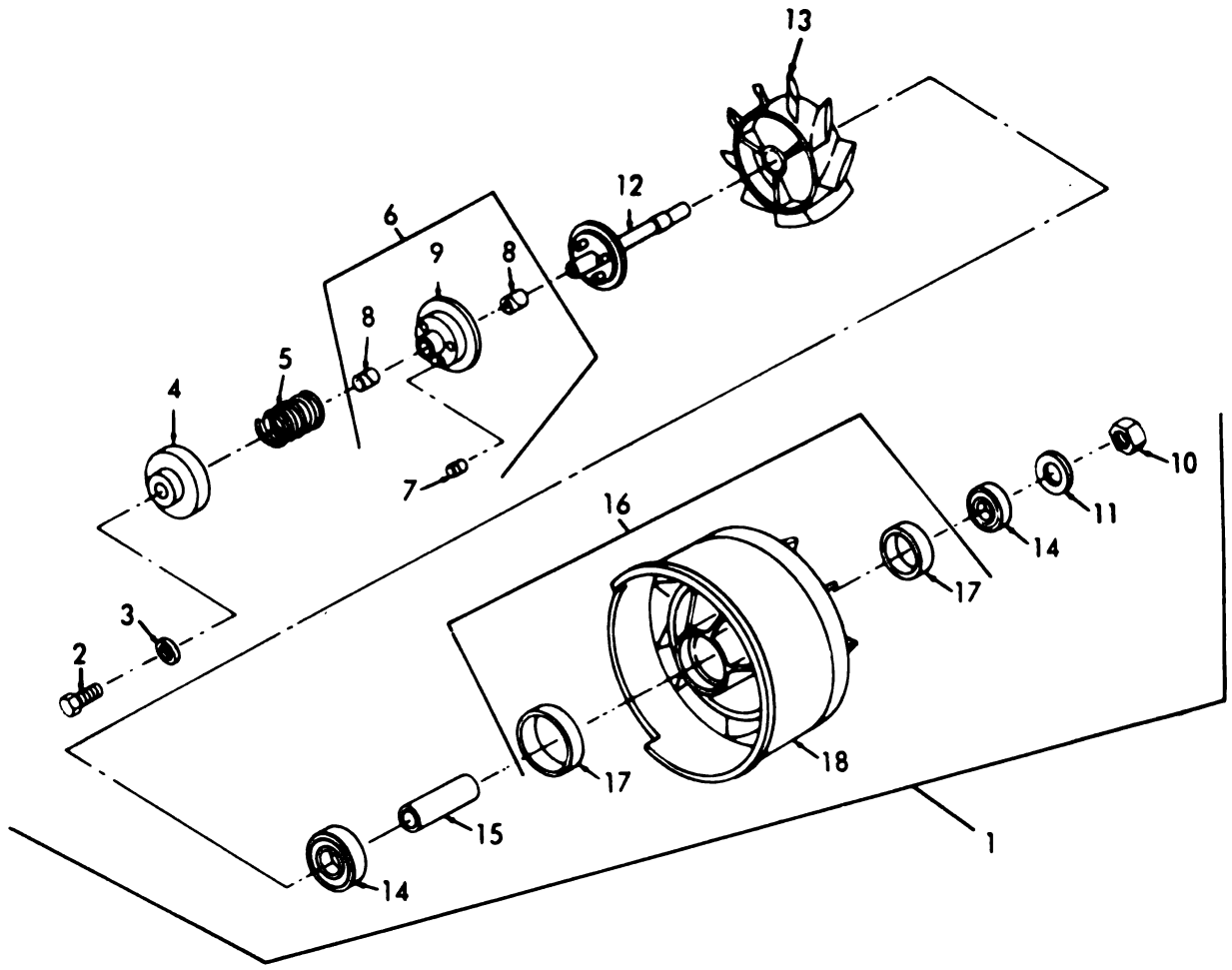


Figure No. 8 Fan Assembly Group

SECTION II

TM 5-2805-213-24P

(1) ILLUSTRATION		(2)	(3)	(4)	(5)	(6)	(7)	(8)
(a) FIG NO	(b) ITEM NO	SMR CODE	NATIONAL STOCK NUMBER	FSCM	PART NUMBER	DESCRIPTION	USABLE ON CODE	QTY INC IN UNIT
						GROUP 08 FAN ASSEMBLY		
8	1	XBOZZ		00000	10919360	HOUSING ASSY, FAN.....	EA	1
8	2	PAOZZ	5305-00-912-5113	96906	MS51096-359	.SCREW, CAP, HEX HEAD.....	EA	1
8	3	PAOZZ	5310-00-044-6477	24617	BEBX1-3446477	.WASHER, FLAT.....	EA	1
8	4	PAOZZ	5330-00-017-8776	19207	10941137	.RETAINER, PACKING.....	EA	1
8	5	PAOZZ	5360-00-017-8678	19207	10919377	.SPRING, HELICAL, COMPRESSION.....	EA	1
8	6	PBOZZ	2805-00-921-6195	19207	10941136	.PULLEY ASSEMBLY, FAN.....	EA	1
8	7	PAOZZ		19207	8738121	..BEARING, DRIVE PIN.....	EA	4
8	8	PAOZZ	3120-00-618-2882	19207	10900482	..BEARING, PULLEY.....	EA	2
8	9	XAOZZ		19207	10941135	..PULLEY.....	EA	1
8	10	PAOZZ	5310-00-939-0783	96906	MS21083N12	.NUT, SELF-LOCKING, HEX HEAD.....	EA	1
8	11	PAOZZ	5310-00-627-6128	96906	MS35335-35	.WASHER, LOCK.....	EA	1
8	12	XBOZZ	2990-00-017-8774	19207	10941134	.SHAFT ASSEMBLY.....	EA	1
8	13	XBOZZ	2930-00-921-6179	19207	10919369	.IMPELLER, FAN, AXIAL.....	EA	1
8	14	PAOZZ		19207	YALX9-21113640	.BEARING, BALL, FAN SHAFT.....	EA	2
8	15	PAOZZ	2990-00-921-6177	19207	10919362	.SPACER.....	EA	1
8	16	XBOZZ		19207	10919366	.HOUSING ASSEMBLY.....	EA	1
8	17	XBOZZ		19207	10919370	..INSERT, BEARING.....	EA	2
8	18	XAOZZ		00000	10919361	..HOUSING.....	EA	1

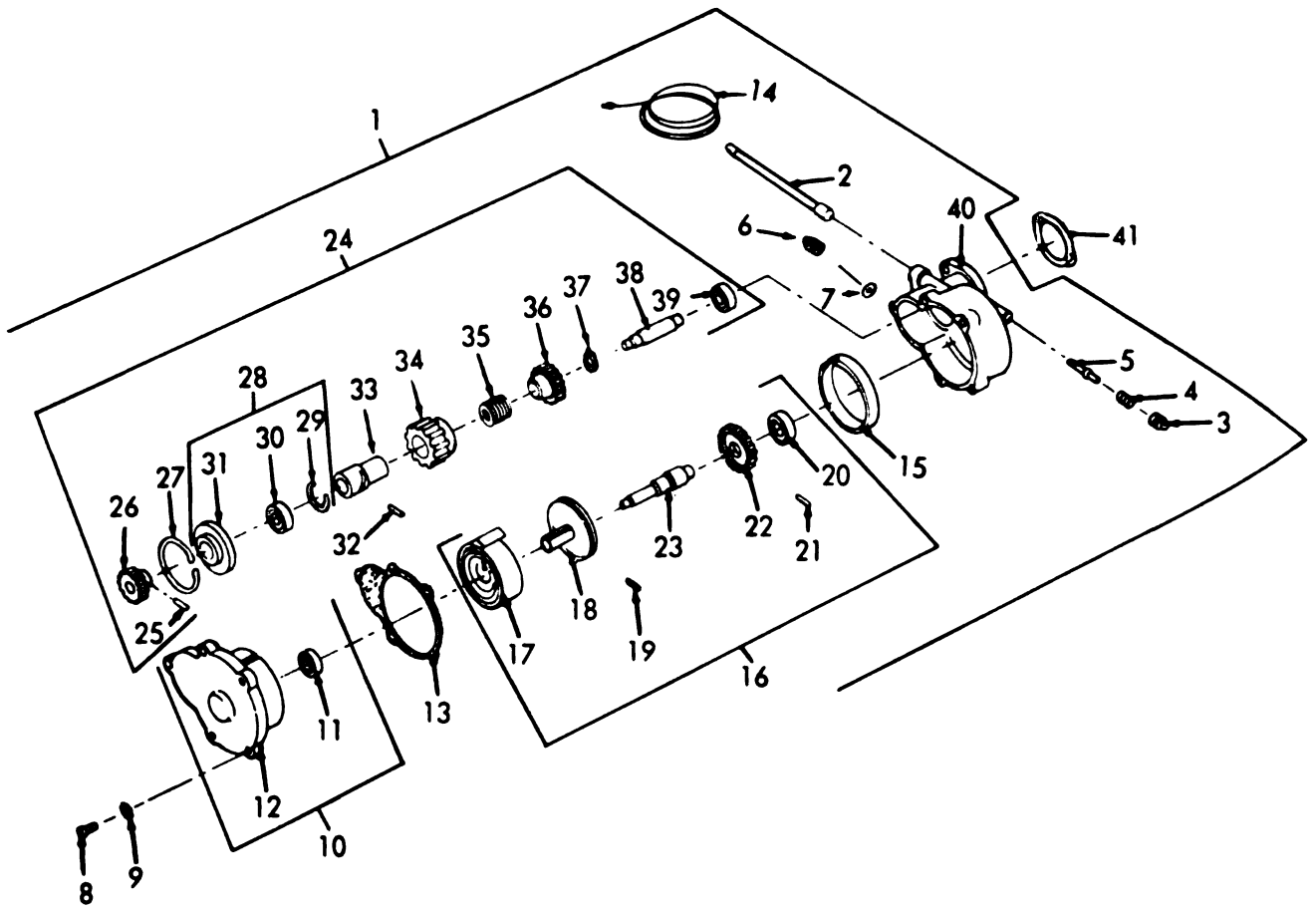


Figure No. 9 Starter Group

SECTION II

TM 5-2805-213-24P

(1) ILLUSTRATION		(2)	(3)	(4)	(5)	(6)	(7)	(8)
(a) FIG NO	(b) ITEM NO	SMR CODE	NATIONAL STOCK NUMBER	FSCM	PART NUMBER	DESCRIPTION	USABLE ON CODE	QTY INC IN UNIT
						GROUP 09 STARTER ASSEMBLY		
9	1	PAOFF	2920-00-570-3057	19207	10941100	STARTER ASSEMBLY.....	EA	1
9	2	PPFZZ	4710-00-921-6204	19207	10941249	.TUBING, NONMETALLIC.....	EA	1
9	3	PAPZZ	4730-00-018-9566	96906	MS49005-2	.PLUG, PIPE.....	EA	1
9	4	XBFZZ	5360-00-921-6192	19207	10941121	.SPRING, HELICAL, COMPRESSION.....	EA	1
9	5	XBFZZ		00000	10941120	.PLUNGER, RATCHET.....	EA	1
9	6	PAPZZ	4730-00-018-9566	96906	MS49005-2	.PLUG, PIPE.....	EA	1
9	7	XBFZZ		96906	MS9021-037	.PACKING, PREFORMED.....	EA	1
9	8	PAPZZ	5306-00-225-8499	96906	MS90725-34	.BOLT, MACHINE.....	EA	5
9	9	PAPZZ	5310-00-514-6674	96906	MS35335-34	.WASHER, LOCK.....	EA	5
9	10	XBFZZ		00000	10941129	.COVER ASSEMBLY, END.....	EA	1
9	11	PAPZZ		19207	CAAX85-713393	.BEARING, BALL.....	EA	1
9	12	XAFZZ		00000	10941119	.COVER.....	EA	1
9	13	KFFZZ		19207	10941118	.GASKET.....	EA	1
9	14	KFFZZ		00000	10919417	.CABLE.....	EA	1
9	15	PAPZZ	2990-00-921-6189	19207	10941116	.RING, CABLE RETAINING.....	EA	1
9	16	APFZZ		00000	10941111	.SHAFT ASSEMBLY, CABLE SHEAVE.....	EA	1
9	17	XBFZZ		00000	10941117	.SPRING, CABLE REWIND.....	EA	1
9	18	XBFZZ		19207	10941113	.SHEAVE ASSY, CABLE.....	EA	1
9	19	PAPZZ	5315-00-687-4571	96906	MS9048-107	.PIN, SPRING.....	EA	1
9	20	XBFZZ		00000	CAAX85-713430	.BEARING, BALL.....	EA	1
9	21	XBFZZ	5315-00-804-0538	96906	MS9048-105	.PIN, DRIVEN.....	EA	1
9	22	XBFZZ	3020-00-921-6187	19207	10941112	.GEAR, SPUR.....	EA	1
9	23	XBFZZ	2990-00-921-6193	19207	10941122	.SHAFT.....	EA	1
9	24	APFZZ		00000	10941102	.SHAFT ASSY, ACTUATOR.....	EA	1
9	25	XBFZZ	5315-00-804-0538	96906	MS9048-105	.PIN, HEADLESS.....	EA	1
9	26	XBFZZ	3020-00-921-6186	19207	10941110	.GEAR, SPUR.....	EA	1
9	27	XBFZZ		96906	MS16631-1262	.RING, RETAINING.....	EA	1
9	28	XBFZZ		00000	10941108	.HOUSING ASSY, BEARING.....	EA	1
9	29	XBFZZ		96906	MS16625-131	.RING, RETAINING.....	EA	1
9	30	XBFZZ		00000	CAAX85-713430	.BEARING, BALL.....	EA	1
9	31	XBFZZ		00000	10941109	.HOUSING.....	EA	1
9	32	XBFZZ	5315-00-921-6198	19207	10941180-1	.PIN, STRAIGHT HEAD.....	EA	1
9	33	XBFZZ	2990-00-133-9865	97403	13215E3705	.ACTUATOR, SPUR GEAR.....	EA	1
9	34	XBFZZ	2990-00-921-6183	19207	10941105	.RATCHET, REVERSE ROTATION, LOCK.....	EA	1
9	35	XBFZZ	2990-00-921-6184	19207	10941106	.SPRING.....	EA	1
9	36	XBFZZ	3020-00-921-6185	19207	10941107	.GEAR, SPUR.....	EA	1
9	37	XBFZZ		96906	MS16624-100	.RING, RETAINING.....	EA	1
9	38	XBFZZ	3040-00-921-6181	19207	10941103	.SHAFT, ACTUATOR.....	EA	1
9	39	XBFZZ		00000	CAAX85-713376	.BEARING, BALL.....	EA	1
9	40	XBFZZ		00000	10941101	.HOUSING, STARTER.....	EA	1
9	41	KFFZZ		19207	10941221	GASKET, STARTER MTG, PART OF KIT P/N 5703462.....	EA	1
9		PAPZZ	2990-00-871-8365	19207	5703460	PARTS KIT, STARTER ASSEMBLY.....	EA	1

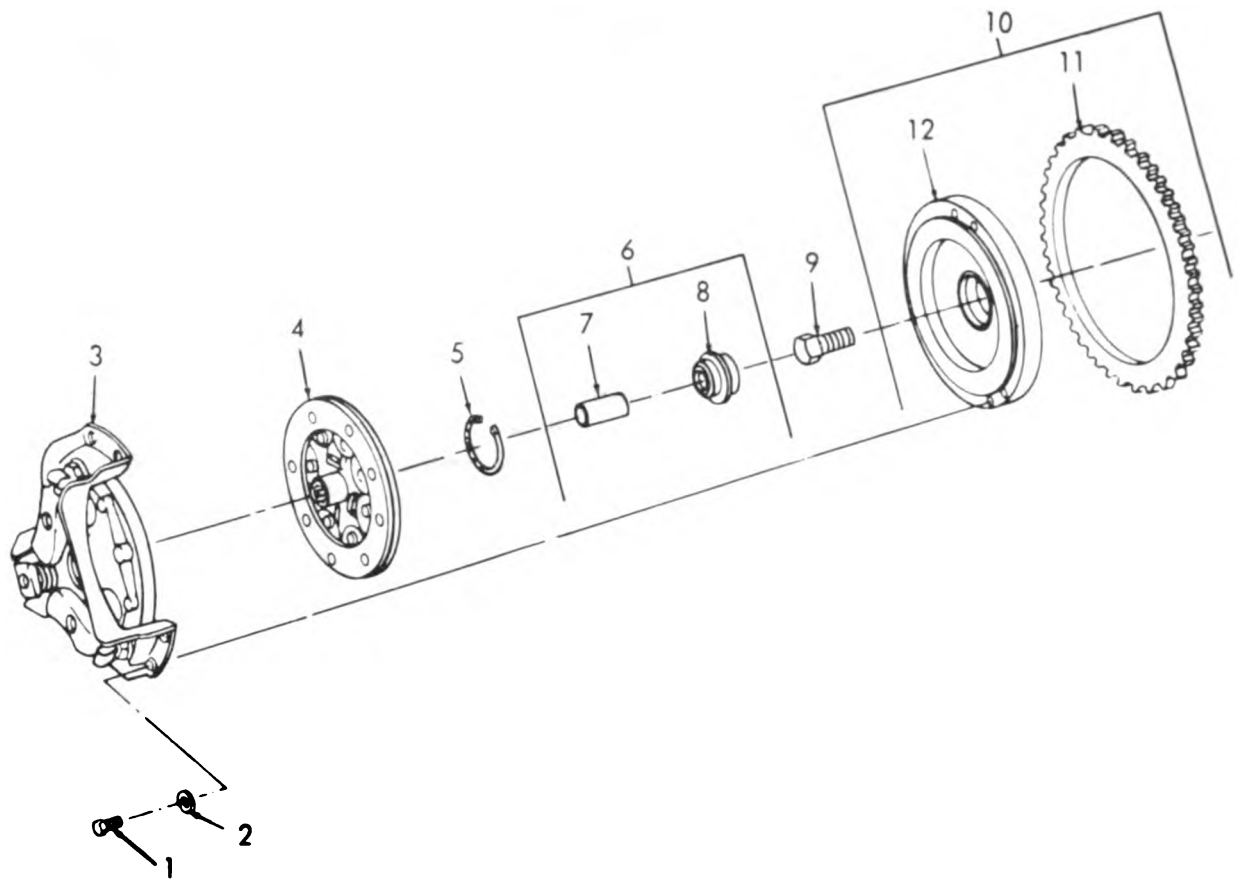


Figure No. 10 Clutch Group

SECTION II

TM 5-2805-213-24P

(1) ILLUSTRATION		(2) SMR CODE	(3) NATIONAL STOCK NUMBER	(4) FSCM	(5) PART NUMBER	(6) DESCRIPTION USABLE ON CODE	(7) U/M	(8) QTY INC IN UNIT
(a) FIG NO	(b) ITEM NO							
						GROUP 10 CLUTCH ASSEMBLY		
10	1	PAPZZ		19207	7023596	BOLT, MACHINE.....	EA	6
10	2	PAPZZ	5310-00-407-9566	96906	MS35337-26	WASHER, LOCK.....	EA	6
10	3	PAPZZ	2520-00-570-3078	19207	10941150	PLATE ASSEMBLY, PRESSURE.....	EA	1
10	4	PAPZZ	2520-00-697-3831	19207	7966621	DISC ASSY, CLUTCH.....	EA	1
10	5	XBFZZ		96906	MS16631-1212	RING, RETAINING.....	EA	1
10	6	XBFZZ		00000	10919415	ADAPTER ASSEMBLY, FLYWHEEL.....	EA	1
10	7	PAPZZ	3120-00-570-3233	02978	10919414	.BUSHING.....	EA	1
10	8	XBFZZ		00000	10919413	.ADAPTER.....	EA	1
10	9	XBFZZ		97403	13213E3266	BOLT.....	EA	1
10	10	XBFZZ	2805-00-570-3018	19207	10919358	FLYWHEEL ASSEMBLY.....	EA	1
10	11	PAPZZ	3020-00-921-6194	19207	10941125	.RING GEAR, FLYWHEEL.....	EA	1
10	12	KAPZZ		00000	10919416	.FLYWHEEL.....	EA	1

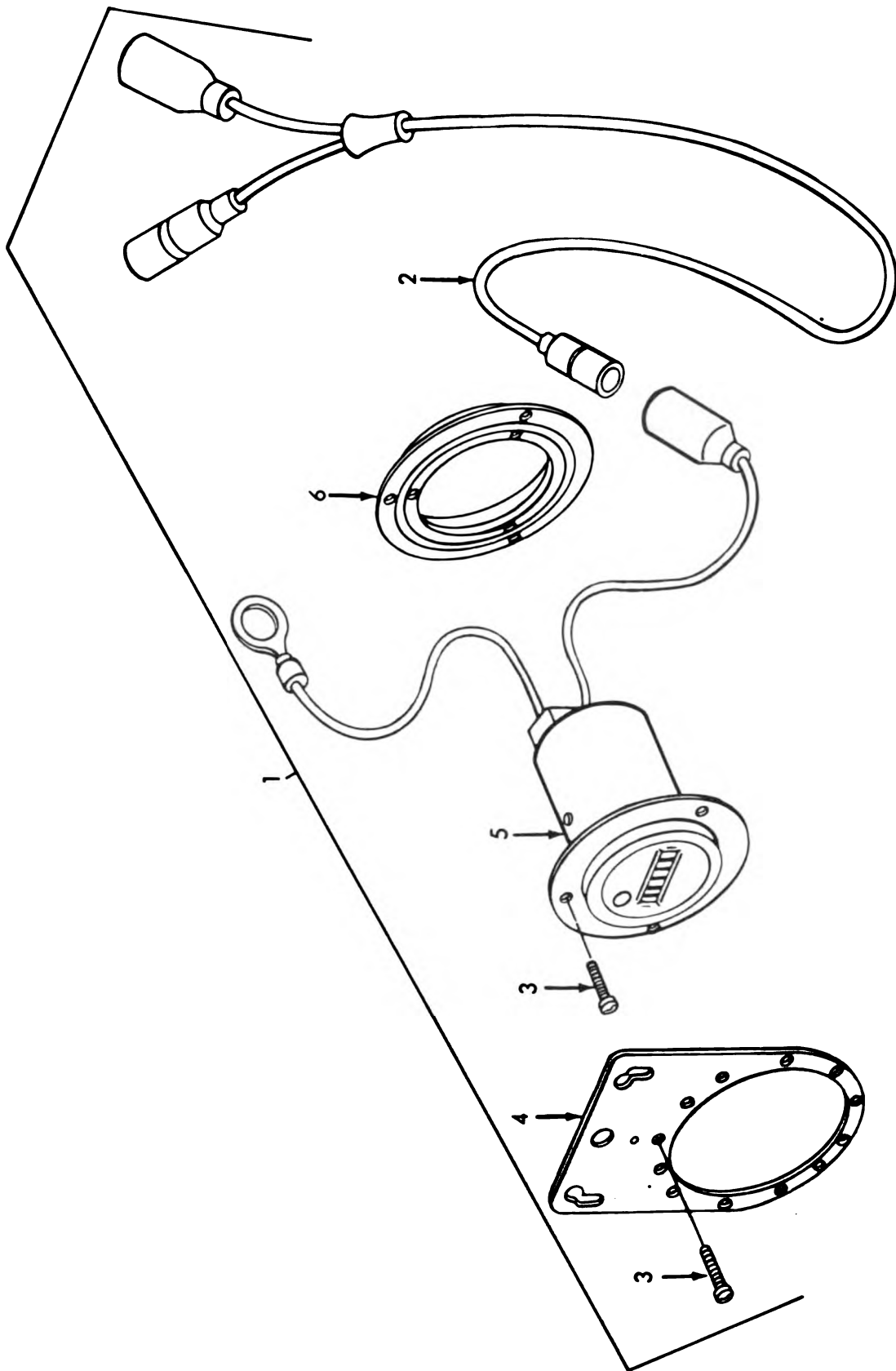


Figure No. 11 Hourmeter Group

SECTION II

TM 5-2805-213-24P

(1) ILLUSTRATION		(2)	(3)	(4)	(5)	(6) DESCRIPTION	(7)	(8)
(a) FIG NO.	(b) ITEM NO.	SMR CODE	NATIONAL STOCK NUMBER	FSCM	PART NUMBER	USABLE ON CODE	U/M	QTY INC IN UNIT
						GROUP 11 HOURMETER ASSEMBLY		
11	1	XBOZZ	6645-00-089-8842	97403	13215E3686	METER, TIME TOTALIZING.....	EA	1
11	2	XAOZZ		97403	13215E3682	.HARNES ASSY.....	EA	1
11	3	PAOZZ	5305-00-889-3000	96906	MS35206-230	.SCREW, MACHINE.....	EA	6
11	4	XAOZZ		97403	13215E3683	.BRACKET, MOUNTING.....	EA	1
11	5	XAOZZ		97403	13215E3685	.METER.....	EA	1
11	6	XAOZZ		97403	13215E3684	.DAMPER, VIBRATION.....	EA	1

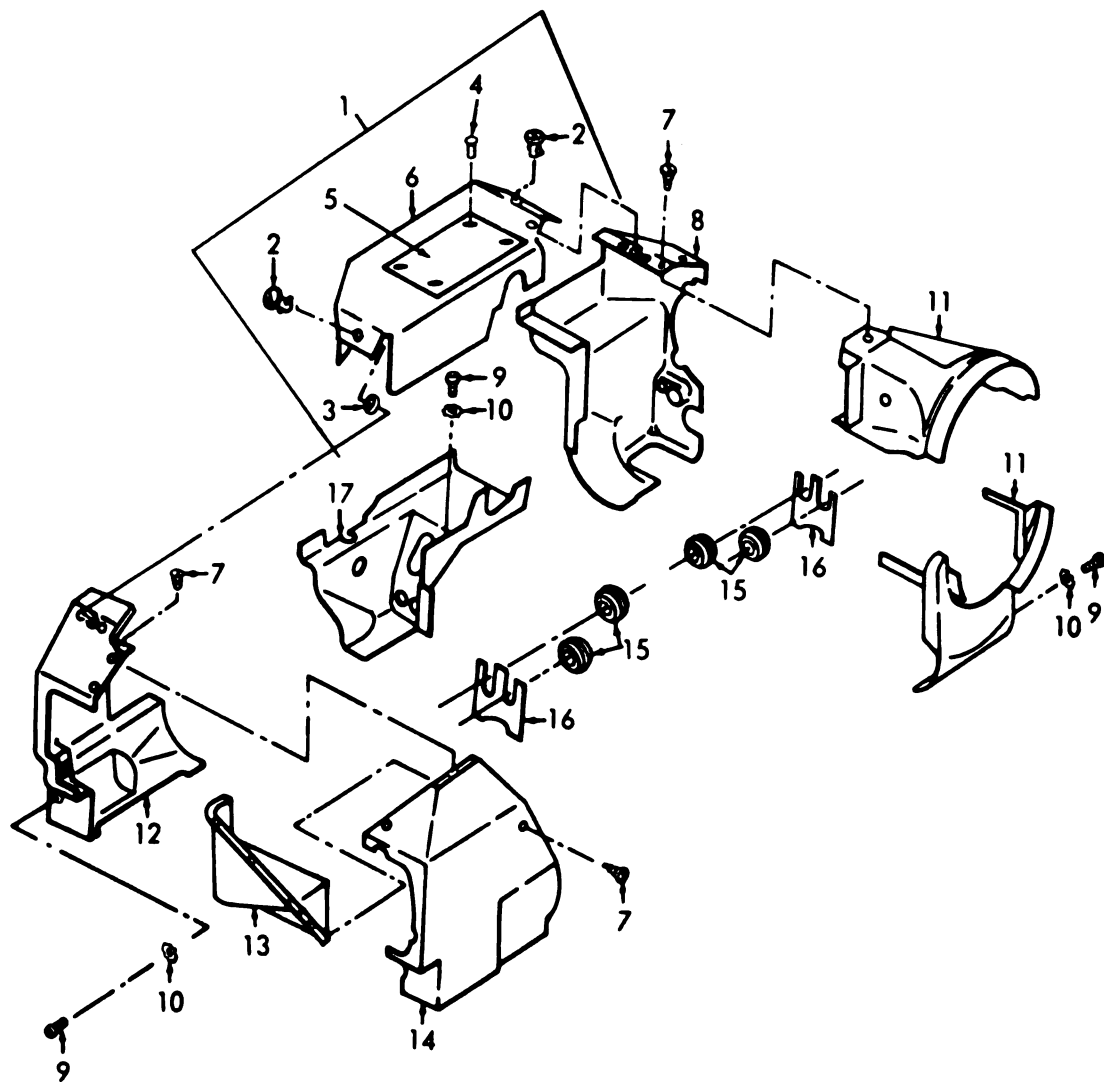


Figure No. 12 Engine Shrouds Group

SECTION II

TM 5-2805-213-24P

(1) ILLUSTRATION		(2)	(3)	(4)	(5)	(6) DESCRIPTION	(7)	(8)
(A) FIG NO	(B) ITEM NO	SMR CODE	NATIONAL STOCK NUMBER	FSCM	PART NUMBER	USABLE ON CODE	U/M	QTY INC IN UNIT
						GROUP 12 ENGINE SHROUDS GROUP		
12	1	XBOZZ		19207	10941230	SHROUD ASSY, ENGINE, UPPER REAR.....	EA	1
12	2	XBOZZ	5325-00-432-9796	97403	13208E5845	.SCREW.....	EA	2
12	3	XBOZZ	5365-00-838-0422	97403	13208E5776	.RETAINER, SCREW.....	EA	2
12	4	XBOZZ		96906	MS20470A95-4	.RIVIT.....	EA	4
12	5	XBOZZ		97403	10919411	.PLATE, IDENT.....	EA	1
12	6	XBOZZ		97403	10941295	.SHROUD ASSEMBLY.....	EA	1
12	7	PAOZZ		96906	MS24641-5	SCREW.....	EA	5
12	8	XBOZZ		19207	10919473	SHROUD ASSY, NO2 CYLINDER, REAR.....	EA	1
12	9	PAOZZ	5305-00-068-0500	96906	MS90725-3	SCREW.....	EA	6
12	10	PAOZZ	5310-00-209-0786	96906	MS35335-33	WASHER, LOCK.....	EA	6
12	11	XBOZZ		19207	10919474	SHROUD ASSEMBLY, NO2 CYLINDER, FRONT.....	EA	1
12	12	XBOZZ		97403	10919470	SHROUD ASSY, NO1 CYLINDER, REAR.....	EA	1
12	13	XBOZZ		00000	10919471	SHROUD ASSEMBLY, MAGNETO ACCESS.....	EA	1
12	14	XBOZZ		00000	10919469	SHROUD ASSEMBLY, NO1 CYLINDER, FRONT.....	EA	1
12	15	XBPZZ		96906	MS35490-20	GROMMET.....	EA	4
12	16	XBPZZ		00000	10919466	RETAINER, PUSH ROD HOUSING GROMMET.....	EA	2
12	17	XBOZZ	2805-00-450-6583	97403	10919472	SHROUD ASSEMBLY.....	EA	1

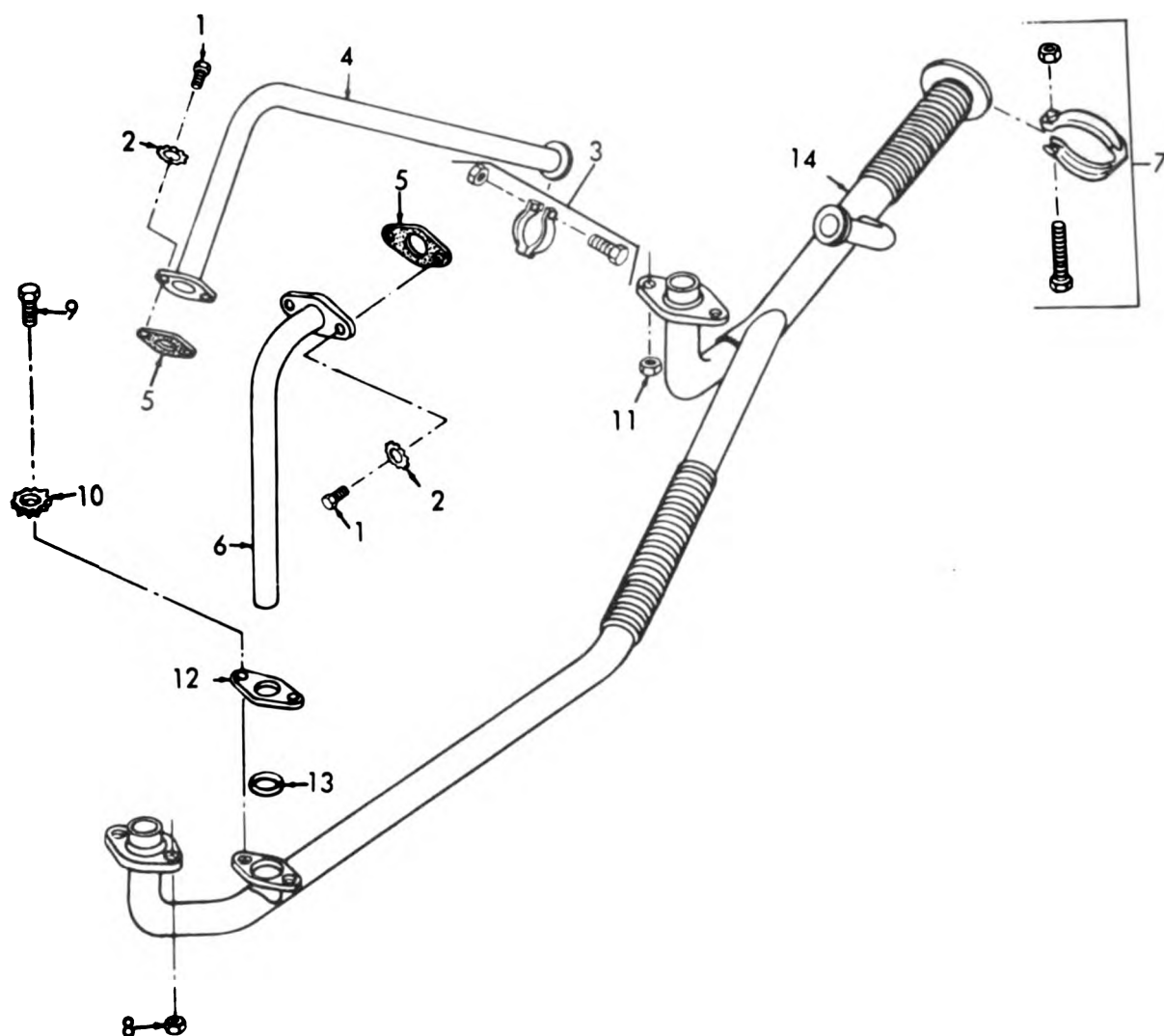


Figure No. 13 Manifold, Exhaust Group

SECTION II

TM 5-2805-213-24P

(1) ILLUSTRATION		(2)	(3)	(4)	(5)	(6)	(7)	(8)
(a) FIG NO	(b) ITEM NO	SMR CODE	NATIONAL STOCK NUMBER	FBCM	PART NUMBER	DESCRIPTION	USABLE ON CODE	QTY INC IN UNIT
						GROUP 13 MANIFOLD, EXHAUST ASSEMBLY		
13	1	PAOZZ	5305-00-068-0502	96906	MS90725-6	SCREW, CAP, HEX HEAD.....	EA	4
13	2	PAOZZ	5310-00-209-0786	96906	MS35335-33	WASHER, LOCK.....	EA	4
13	3	PAOZZ	5340-00-832-5682	97403	13215E3759-2	CLAMP, GROOVED.....	EA	1
13	4	XBOZZ	2990-00-921-6210	19207	10941285	TUBE ASSEMBLY, WELDED BYPASS.....	EA	1
13	5	KFOZZ		97403	9786E50-2	GASKET, EXHAUST BYPASS TUBE, PART OF KIT P/N 5703462.....	EA	2
13	6	XBOZZ	2590-00-570-2998	19207	10919435	TUBE ASSEMBLY.....	EA	1
13	7	PAOZZ	5340-00-832-7104	97403	13215E3759-1	CLAMP, LOOP.....	EA	1
13	8	PAOZZ	5310-00-017-8919	71838	4005	NUT, PLAIN, HEX HEAD.....	EA	2
13	9	PAOZZ	5306-00-021-3912	96906	MS35308-334	BOLT, MACHINE.....	EA	2
13	10	PAOZZ	5310-00-184-9562	96906	MS35335-62	WASHER, LOCK.....	EA	2
13	11	PAOZZ	5310-00-017-8919	97403	9786E50-1	NUT, PLAIN, HEX HEAD.....	EA	2
13	12	XBOZZ		00000	10919453	FLANGE, BYPASS.....	EA	1
13	13	KFOZZ		00000	10919452	SEAL, EXHAUST BYPASS TUBE.....	EA	1
13	14	XBOZZ	2590-00-570-2998	19207	10919435	TUBE ASSEMBLY.....	EA	1

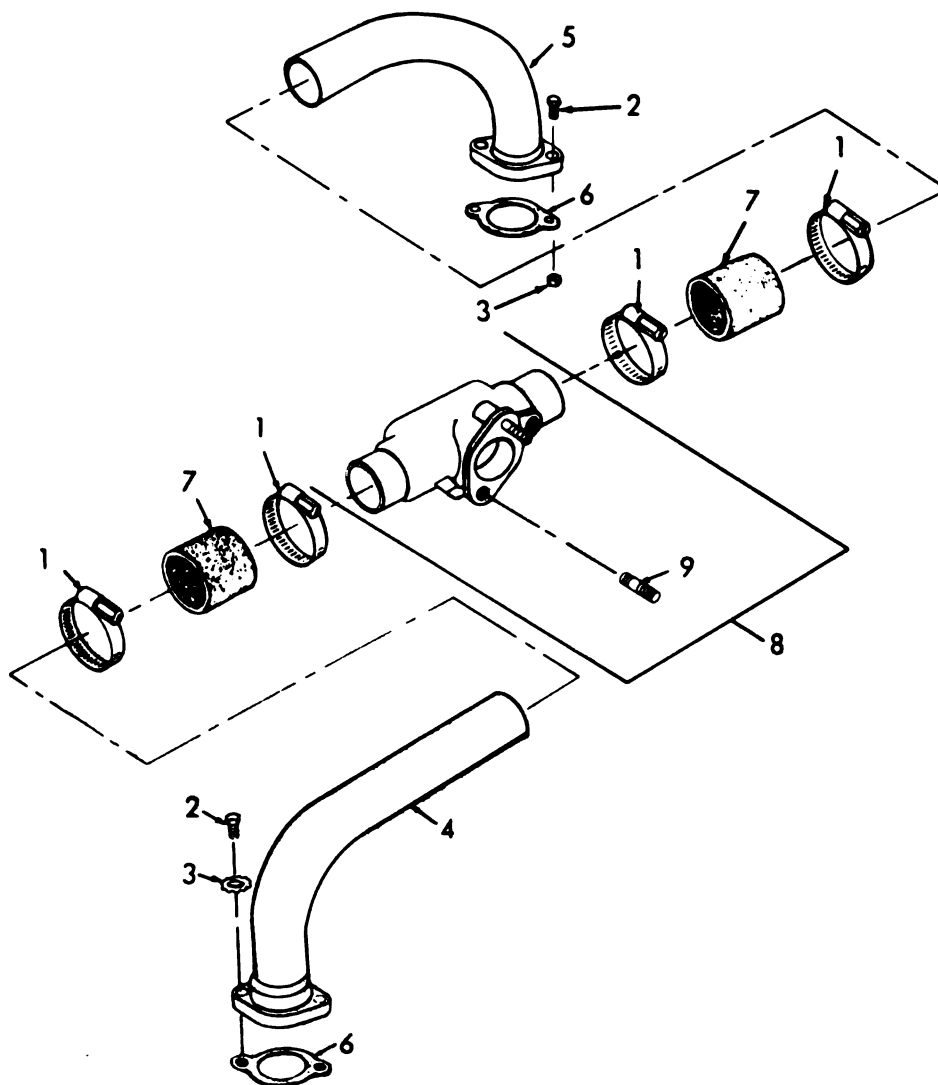


Figure No. 14 Manifold, Intake

SECTION II

TM 5-2805-213-24P

(1) ILLUSTRATION		(2)	(3)	(4)	(5)	(6)	(7)	(8)
(a) FIG NO	(b) ITEM NO	SMR CODE	NATIONAL STOCK NUMBER	FSCM	PART NUMBER	DESCRIPTION USABLE ON CODE	U/M	QTY INC IN UNIT
						GROUP 14 MANIFOLD, INTAKE GROUP		
14	1	PAOZZ	4730-00-909-8627	96906	MS35842-13	CLAMP, HOSE.....	EA	4
14	2	XBOZZ		19207	10947213-4	SCREW, CAP, HEX HEAD.....	EA	4
14	3	PAOZZ	5310-00-209-0786	96906	MS35335-33	WASHER, LOCK.....	EA	4
14	4	XBOZZ	4730-00-921-6213	19207	10941305	ELBOW, FLANGE.....	EA	1
14	5	XBOZZ		19207	10941302	ELBOW ASSEMBLY, INTAKE MANIFOLD.....	EA	1
14	6	KFOZZ		97403	9786E50-2	GASKET.....	EA	2
14	7	PAOZZ		97403	13206E0864	HOSE.....	EA	2
14	8	XBOZZ		00000	10919449	MANIFOLD ASSEMBLY, INTAKE.....	EA	1
14	9	XBOZZ	5307-00-637-9960	88044	AN126294	.STUD, PLAIN.....	EA	2

SECTION II

TM 5-2805-213-24P

(1) ILLUSTRATION		(2)	(3)	(4)	(5)	(6)	(7)	(8)
(A) FIG NO	(B) ITEM NO	SMR CODE	NATIONAL STOCK NUMBER	FSCM	PART NUMBER	DESCRIPTION	USABLE ON CODE	QTY INC IN UNIT
						GROUP 15 CYLINDER		
15	1	PA02E	5305-00-405-1694	19207	10947213-2	SCREW, ASSEMBLED WASHER.....	EA	9
15	2	XB02E	2805-00-758-6646	97403	13206E0686	COVER, ENGINE POPPET.....	EA	2
15	3	KF02E		97403	13206E685	GASKET, ROCKER BOX COVER, PART OF KIT P/N 5703462.....	EA	2
15	4	PAF2E		97403	13214E8578-1	NUT.....	EA	4
15	5	PAF2E	3120-00-925-8007	97403	13213E3302	BUSHING, SLEEVE.....	EA	4
15	6	AFP2E		00000	10941188	ROCKER AND SHAFT ASSEMBLY.....	EA	2
15	7	PAF2E	5365-00-804-2189	96906	MS16624-3062	.RING, RETAINING.....	EA	2
15	8	PAF2E	5310-00-867-8802	97403	13213E3294	.WASHER, FLAT.....	EA	4
15	9	PAF2E	2805-00-867-8757	97403	13206E0700	.ROCKER ARM ASSY.....	EA	2
15	10	XAF2E		97403	13206E0703	.BUSHING, SLEEVE.....	EA	1
15	11	XAF2E		97403	13206E0701	.ROCKER, VALVE.....	EA	1
15	12	PAF2E	2805-00-930-6244	97403	13213E3300	.SHAFT, STRAIGHT.....	EA	1
15	13	PAF2E	2805-00-073-3026	97403	13206E0680-1	PUSH ROD.....	EA	4
15	14	XBF2E	2805-00-851-6783	97403	13213E3301	SUPPORT, ROCKER SHAFT.....	EA	4
15	15	KFF2E		96906	MS9068-111	PACKING, PREPOMED, ROCKER SHAFT SUPPORT..... PART OF KIT P/N 5703462.....	EA	4
15	16	PAF2E	2990-00-017-8422	52167	TENSILOCK	NUT.....	EA	8
15	17	PAF2E	5310-00-209-3671	97403	13213E3295	WASHER, FLAT.....	EA	8
15	18	PAF2E	5310-00-073-3048	97403	13206E0964	WASHER, RECESSED.....	EA	2
15	19	PAF2E	2805-00-937-0944	97403	13214E8208	HEAD ASSEMBLY, CYLINDER.....	EA	2
15	20	PAF2E	2805-00-913-9751	59875	FRL45	.LOCK, VALVE SPRING.....	EA	2
15	21	PAF2E	2805-00-922-7734	97403	13206E0669	.ROTOR, ENGINE POPPET.....	EA	2
15	22	PAF2E	5360-00-926-1768	97403	13206E0679	.SPRING, HELICAL, COMPRESSION.....	EA	2
15	23	PAF2E	2805-00-922-6351	77220	T-1711	.SEAL ASSEMBLY, VALVE.....	EA	2
15	24	PAF2E	2805-00-570-3040	19207	10941184	.VALVE, EXHAUST.....	EA	1
15	25	PAF2E	2805-00-570-3035	19207	10941183	.VALVE, INTAKE.....	EA	1
15	26	XBF2E	5307-00-053-1053	96906	MS17300-061	.STUD, PLAIN.....	EA	2
15	27	XAF2E		97403	13206E0670	.HEAD SUB-ASSEMBLY.....	EA	1
15	28	XAF2E		97403	13206E0676	.INSERT, SPARK PLUG.....	EA	1
15	29	PAF2E	2805-00-073-3021	97403	13206E0675	.GUIDE, VALVE.....	EA	2
15	30	XAF2E		97403	13206E0671	.HEAD, CYLINDER.....	EA	1
15	31	XBF2E	2805-00-073-3024	97403	13206E0667	HOUSING, PUSH ROD.....	EA	4
15	32	PAF2E	2805-00-073-3027	97403	13206E0668	SPRING, PUSH ROD.....	EA	4
15	33	KFF2E		96906	MS9068-211	PACKING, PREPOMED, PUSH ROD HOUSING SEAL..... PART OF KIT P/N 5703462.....	EA	8

Change 1

37

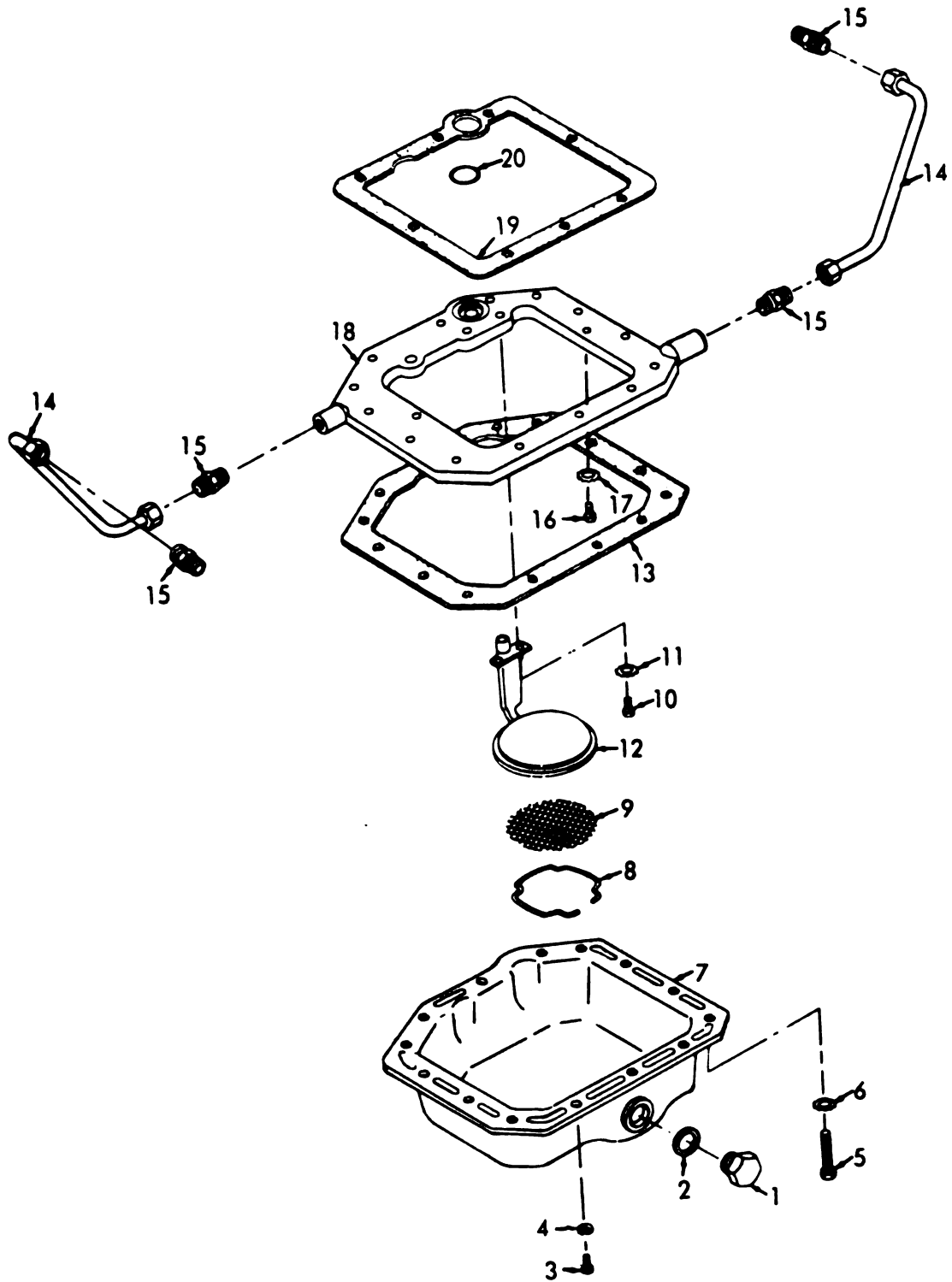


Figure No. 16 Oil Pan Group

SECTION II

TM 5-2805-213-24P

(1) ILLUSTRATION		(2) SMR CODE	(3) NATIONAL STOCK NUMBER	(4) FSCM	(5) PART NUMBER	(6) DESCRIPTION USABLE ON CODE	(7) U/M	(8) QTY INC IN UNIT
(a) FIG NO	(b) ITEM NO							
						GROUP 16 OIL PAN ASSEMBLY		
16	1	PAOZZ	5365-00-898-2081	96906	MS35844-83	PLUG, MACHINE THREAD.....	EA	1
16	2	PAOZZ	5330-00-921-6224	97403	13213E3283	GASKET.....	EA	1
16	3	XDFZZ	5306-00-226-4823	96906	MS90725-29	BOLT, MACHINE.....	EA	9
16	4	PAFZZ	5310-00-514-6674	96906	MS35335-34	WASHER, LOCK.....	EA	9
16	5	PAFZZ	5305-00-225-3839	96906	MS90725-8	SCREW.....	EA	5
16	6	PAFZZ	5310-00-209-0786	96906	MS35335-33	WASHER, LOCK.....	EA	1
16	7	XBFZZ		00000	10919392	PAN, OIL.....	EA	1
16	8	PAFZZ	2520-00-017-8683	19207	10919390	RETAINER, OIL SUMP SCREEN.....	EA	1
16	9	PAFZZ	2520-00-017-8679	19207	10919391	SCREEN, OIL SUMP.....	EA	1
16	10	PAFZZ	5305-00-068-0500	96906	MS90725-3	SCREW, CAP, HEX HEAD.....	EA	2
16	11	PAFZZ	5310-00-209-0786	96906	MS35335-33	WASHER, LOCK.....	EA	2
16	12	PAFZZ	2590-00-570-3012	19207	10919386	OIL SUMP, OIL PUMP.....	EA	1
16	13	KFFZZ		00000	10919384	GASKET, OIL PAN MOUNTING, PART OF KIT P/N 5703462.....	EA	1
16	14	PAOZZ	2590-00-570-2992	19207	10919462	TUBE ASSEMBLY, OIL DRAIN.....	EA	2
16	15	XBOZZ		96906	MS39169-5	ADAPTER, STRAIGHT.....	EA	4
16	16	PAFZZ	5305-00-225-3839	96906	MS90725-8	SCREW, CAP, HEX HEAD.....	EA	1
16	17	PAFZZ	5310-00-209-0786	96906	MS35335-33	WASHER, LOCK.....	EA	1
16	18	XBFZZ		00000	10941192	SPACER, OIL PAN.....	EA	1
16	19	KFFZZ		97403	13206E0733	GASKET, OIL PAN SPACER TO CRANKCASE MTG. PART OF KIT P/N 5703462.....	EA	1
16	20	KFFZZ		00000	10946958-4	O-RING.....	EA	1

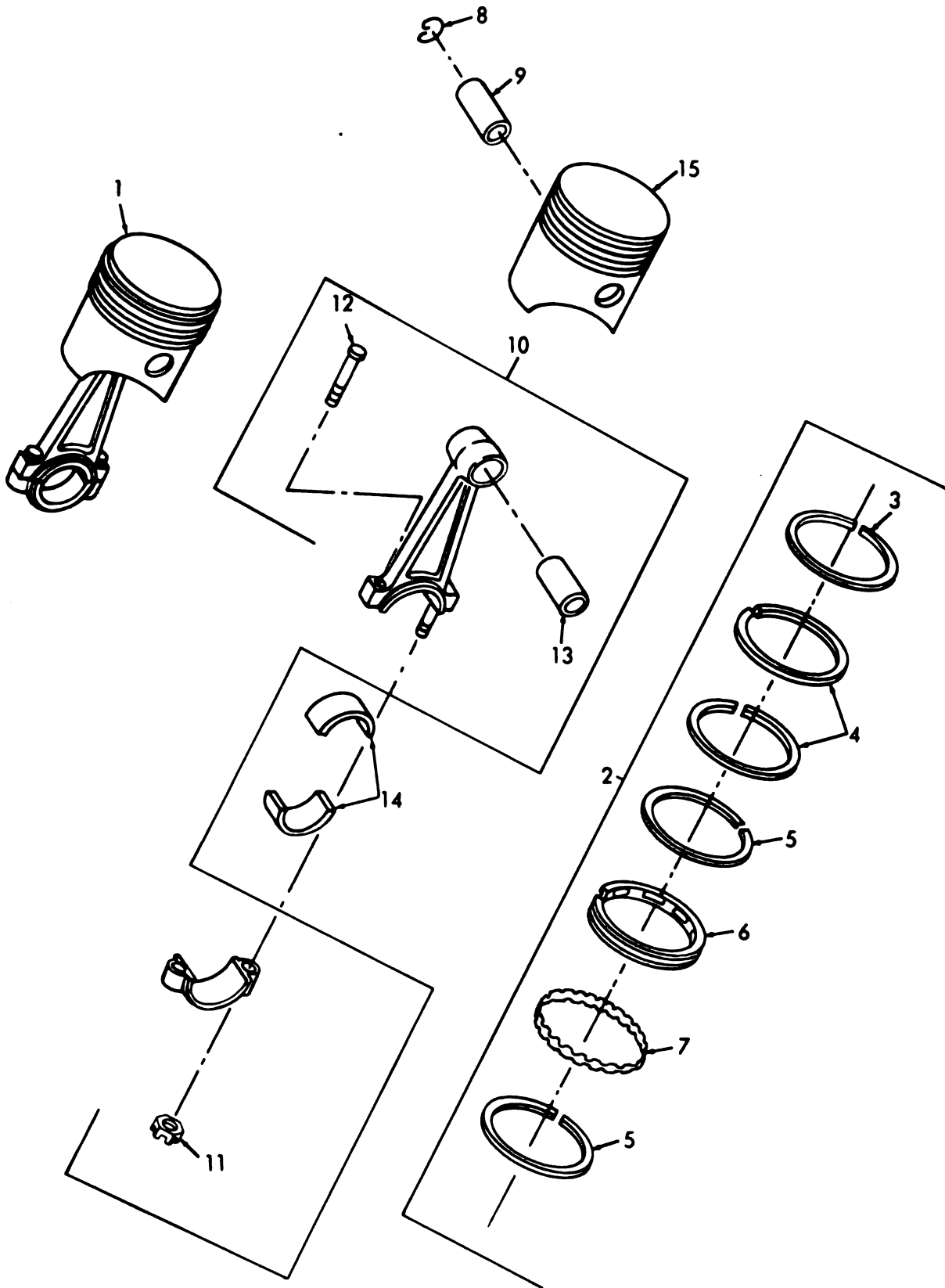


Figure No. 17 Piston And Connecting Rod Group

SECTION II

TM 5-2805-213-24P

(1) ILLUSTRATION		(2)	(3)	(4)	(5)	(6)	(7)	(8)
(8) FIG NO	(D) ITEM NO	SMR CODE	NATIONAL STOCK NUMBER	FSCM	PART NUMBER	DESCRIPTION	USABLE ON CODE	QTY INC IN UNIT
						GROUP 17 PISTON AND CONNECTING ROD ASSEMBLY		
17	1	PAPZZ	2805-00-925-0106	97403	10941185	PISTON AND CONNECTING ROD ASSEMBLY.....	EA	2
17	2	PAPZZ	2805-00-073-3020	97403	13214E8207	.KIT, PISTON RING.....	EA	1
17	3	XAPZZ		97403	13206E0643	..SPACER, TOP COMPRESSION RING.....	EA	1
17	4	XAPZZ		96906	MS13933-1	..RING, PISTON, TOP COMPRESSION.....	EA	2
17	5	XAPZZ		96906	MS13932-1	..RING, PISTON, INTERMEDIATE COMPRESSION.....	EA	1
17	6	XAPZZ		96906	MS13931-1	..RING, PISTON, OIL.....	EA	1
17	7	XAPZZ		96906	MS13929-1	..EXPANDER, OIL RING.....	EA	1
17	8	PAPZZ	5365-00-374-9707	96906	MS13962-1	.RING, RETAINING.....	EA	2
17	9	PAPZZ	2805-00-554-9818	96906	MS13996-1	.PIN, PISTON.....	EA	1
17	10	PAPZZ	2805-00-073-3017	97403	13206E0650	.ROD AND CAP ASSEMBLY.....	EA	1
17	11	PAPZZ	5310-00-917-6624	97403	13214E9578-1	..NUT, SELF-LOCKING.....	EA	2
17	12	PAPZZ	5306-00-073-3018	97403	13206E0653	..BOLT, SHOULDER.....	EA	2
17	13	XAPZZ		96906	MS13963-1	..BEARING, PISTON PIN.....	EA	1
17	14	PAPZZ	3120-00-867-8754	96906	MS13836-1	.BEARING, HALF-SLEEVE.....	EA	1
17	15	PAPZZ	2805-00-570-3042	97403	13206E0641	.PISTON, INTERNAL COMPRESSION, SIZE D W/O RINGS.....	EA	1

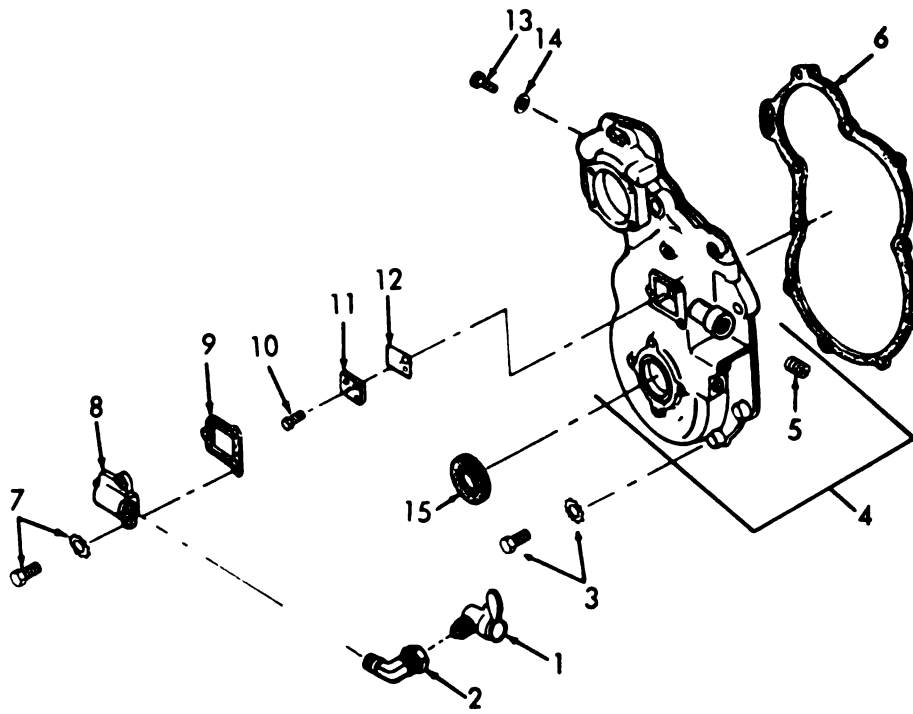


Figure No. 18 Cover, Timing Gear Group

SECTION II

TM 5-2805-213-24P

(1) ILLUSTRATION		(2) SMR CODE	(3) NATIONAL STOCK NUMBER	(4) FSCM	(5) PART NUMBER	(6) DESCRIPTION USABLE OR CODE	(7) U/M	(8) QTY INC IN UNIT
(a) FIG NO	(b) ITEM NO							
GROUP 18 COVER, TIMING GEAR ASSEMBLY								
18	1	PAOZZ	4820-00-921-6217	19207	10941316	COCK, SHUTOFF, SCREW.....	EA	1
18	2	PAOZZ	4730-00-921-6197	19207	10941179	ELBOW ASSEMBLY, BREATHER TUBE.....	EA	1
18	3	PAHZZ	5305-00-017-9085	19207	10947213-1	SCREW, ASSEMBLED WASHER.....	EA	9
18	4	XBHZZ		00000	10941220	COVER ASSEMBLY, TIMING GEAR.....	EA	1
18	5	XBFZZ	4730-00-018-9566	96906	MS21336-2	.PLUG, PIPE.....	EA	1
18	6	KPHZZ		97403	13206E0582	GASKET, PART OF KIT P/N 5703462.....	EA	1
18	7	PAOZZ		19207	BCYX5-1425315	SCREW, LOCK WASHER.....	EA	3
18	8	XBOZZ		00000	10941187	COVER ASSEMBLY, CRANKCASE BREATHER.....	EA	1
18	9	KFOZZ		97403	13206E0607	GASKET, CRANKCASE BREATHER COVER, PART OF KIT P/N 5703462...	EA	1
18	10	PAOZZ		19207	10947213-5	SCREW, ASSEMBLED WASHER.....	EA	3
18	11	XBOZZ	2805-00-921-6222	97403	13206E0605	SUPPORT, AIR BREATHER.....	EA	1
18	12	XBOZZ	2805-00-921-6221	97403	13206E0604	REED, AIR BREATHER.....	EA	1
18	13	PAOZZ	6645-00-832-5680	97403	13215E3687	PLUG.....	EA	1
18	14	PAOZZ	5330-00-570-3219	97403	13206E0599	GASKET, HOURMETER ADAPTER, PART OF KIT P/N 5703462.....	EA	1
18	15	KPFZZ		97403	13206E0593	SEAL, OIL, CRANKCASE FRONT, PART OF KIT P/N 5703462.....	EA	1

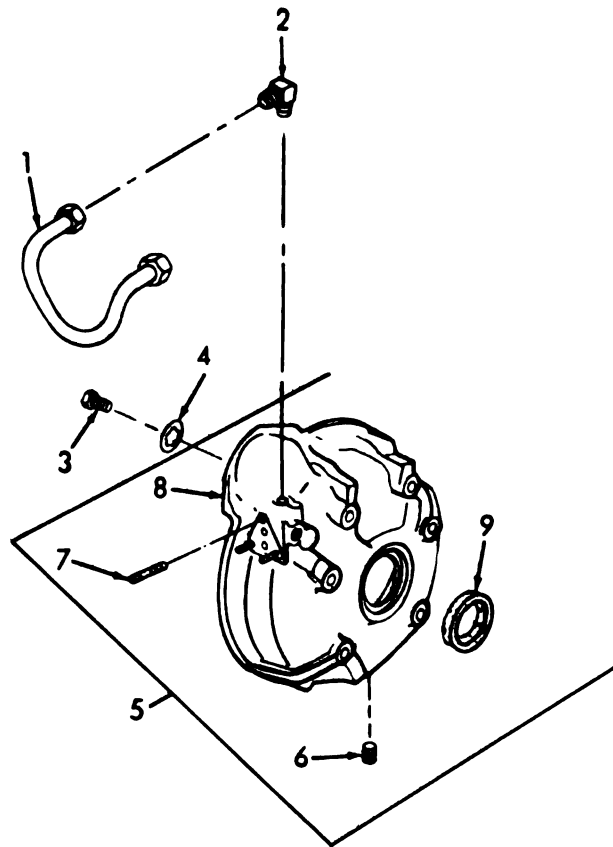


Figure No. 19 Flywheel Housing Group

SECTION II

TM 5-2805-213-24P

(1) ILLUSTRATION		(2) SAMR CODE	(3) NATIONAL STOCK NUMBER	(4) FSCM	(5) PART NUMBER	(6) DESCRIPTION USABLE ON CODE	(7) U/A	(8) QTY INC IN UNIT
(a) FIG NO	(b) ITEM NO							
19	1	PAOZZ	2590-00-570-2987	19207	10919463	GROUP 19 FLYWHEEL HOUSING ASSEMBLY . TUBE, OIL FILTER OUTLET.....	EA	1
19	2	PAOZZ	4730-00-068-6616	96906	MS39171-5	ELBOW, PIPE.....	EA	2
19	3	PAFZZ	5305-00-945-9593	19207	87433903-3	SCREW, CAP, HEX HEAD.....	EA	6
19	4	PAFZZ	5310-00-080-6004	96906	MS27183-14	WASHER, FLAT.....	EA	1
19	5	XPZZ		00000	10919436	HOUSING ASSY, FLYWHEEL.....	EA	1
19	6	PAFZZ	4730-00-985-4139	96906	MS49005-1	.PLUG, PIPE.....	EA	1
19	7	XBOZZ	5307-00-637-9970	88044	AN126018	.STUD, PLAIN.....	EA	3
19	8	XAFZZ		00000	10919418	.FLYWHEEL HOUSING.....	EA	1
19	9	KFPZZ		97403	13206E0545	SEAL, PLAIN, ENCASED, CRANKSHAFT REAR..... PART OF KIT P/N 5703462.....	EA	1

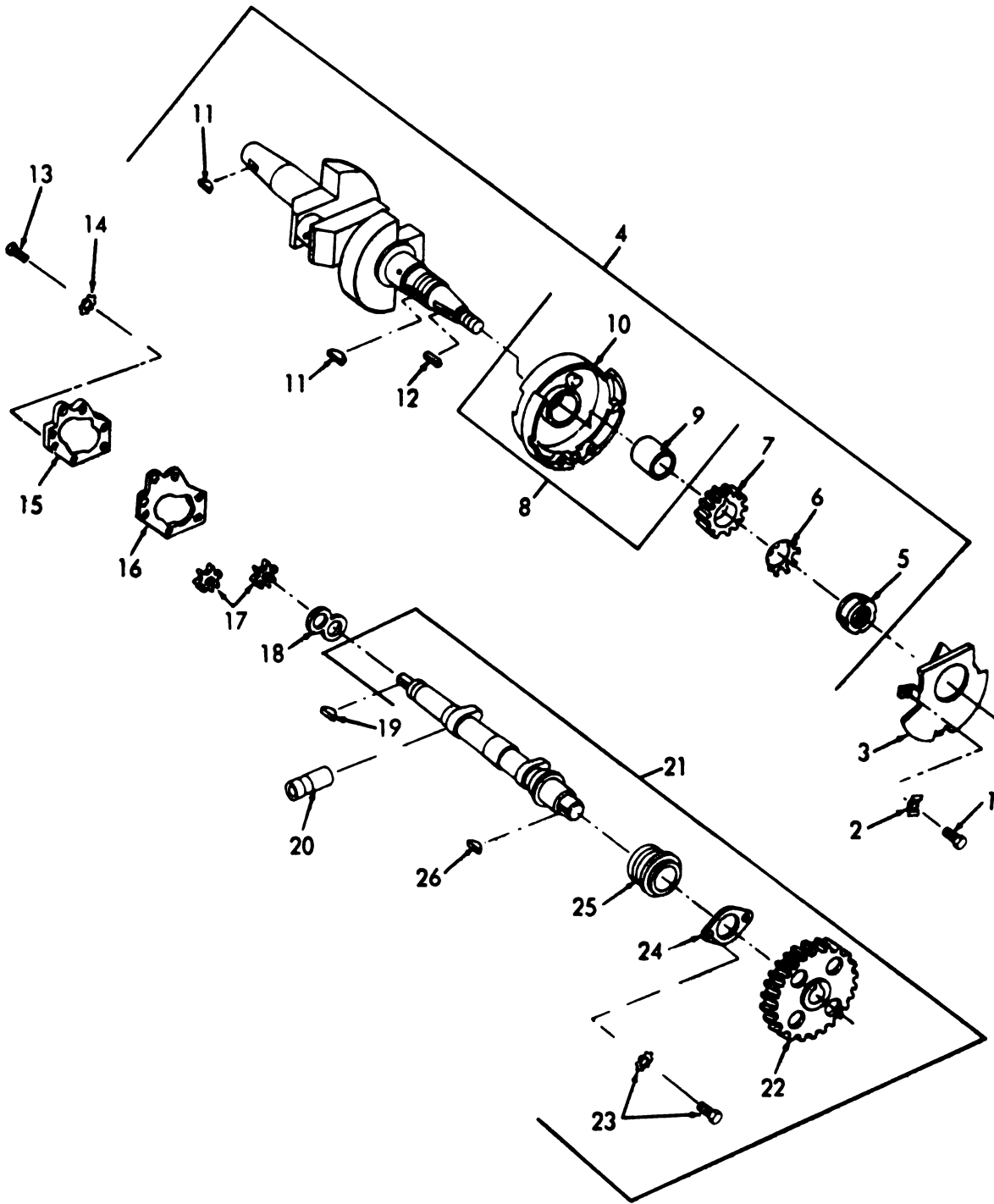


Figure No. 20 Crankshaft And Camshaft Group

SECTION II

TM 5-2805-213-24P

(1) ILLUSTRATION		(2)	(3)	(4)	(5)	(6)	(7)	(8)
(A) FIG NO	(B) ITEM NO	SMR CODE	NATIONAL STOCK NUMBER	FSCM	PART NUMBER	DESCRIPTION	USABLE ON CODE	QTY INC IN UNIT
						GROUP 20 CRANKSHAFT AND CAMSHAFT ASSEMBLY		
20	1	PAFZZ		00000	BQX1-583871	SCREW.....	EA	3
20	2	PAFZZ	5310-00-017-8328	97403	13206E0613	WASHER, KEY.....	EA	3
20	3	XBFZZ		97403	13206E629	BAFFLE, DIAPHRAGM.....	EA	1
20	4	PAHZZ	2805-00-017-9092	97403	13206E0611	CRANKSHAFT, ENGINE.....	EA	1
20	5	PAFZZ	5310-00-867-8747	97403	13206E0930	.NUT, PLAIN, ROUND.....	EA	1
20	6	PAFZZ	5310-00-726-7690	96906	MS172285	.WASHER, KEY.....	EA	1
20	7	PAFZZ	2530-00-017-8674	97403	13206E0626	.GEAR, TIMING.....	EA	1
20	8	XBHZZ	2805-00-867-8743	97403	13206E0620	.DIAPHRAGM, MAIN BEARING.....	EA	1
20	9	PAHZZ	2990-00-017-8921	97403	13206E0534	..BUSHING.....	EA	1
20	10	XAHZZ		97403	13206E0621	..DIAPHRAGM.....	EA	1
20	11	PAHZZ	5315-00-043-1789	96906	MS35756-38	.KEY, WOODRUFF, TIMING GEAR MTG.....	EA	2
20	12	PAFZZ	5315-00-989-2342	96906	MS20066-183	.KEY, MACHINE, FAN DRIVE PULLEY MTG.....	EA	1
20	13	PAFZZ		00000	BQX1-583871	SCREW.....	EA	7
20	14	PAFZZ		96906	MS35335-19	WASHER, LOCK.....	EA	7
20	15	XBFZZ		97403	13206E0718	COVER, OIL PUMP.....	EA	1
20	16	KPFZZ		97403	13206E0717	GASKET, OIL PUMP COVER MTG, PART OF KIT P/N 5703462.....	EA	1
20	17	PAFZZ		00000	10941163	GEAR, OIL PUMP.....	EA	2
20	18	XBFZZ	5330-00-017-8923	97403	13206E0715	GASKET, GEAR.....	EA	1
20	19	PAFZZ	5315-00-616-5515	96906	MS35756-5	KEY, WOODRUFF.....	EA	1
20	20	PAFZZ	2905-00-784-3686	97403	13206E0580	TAPPET, ENGINE POPPET.....	EA	4
20	21	PAHZZ		97403	13206E8571	CAMSHAFT ASSEMBLY.....	EA	1
20	22	PAFZZ	3020-00-868-0889	97403	13206E0716	.GEAR, SPUR.....	EA	1
20	23	PAHZZ	5305-00-405-1694	19207	10947213-2	.SCREW, ASSEMBLED WASHER.....	EA	2
20	24	XBHZZ	5365-00-017-8676	97403	13206E0574	.RETAINER, FRONT BEARING.....	EA	1
20	25	PAHZZ	3120-00-073-3030	97403	13206E0573	.BEARING, SLEEVE.....	EA	1
20	26	PAFZZ		00000	BGKX1-589689	.KEY, WOODRUFF, CAMSHAFT GEAR.....	EA	1

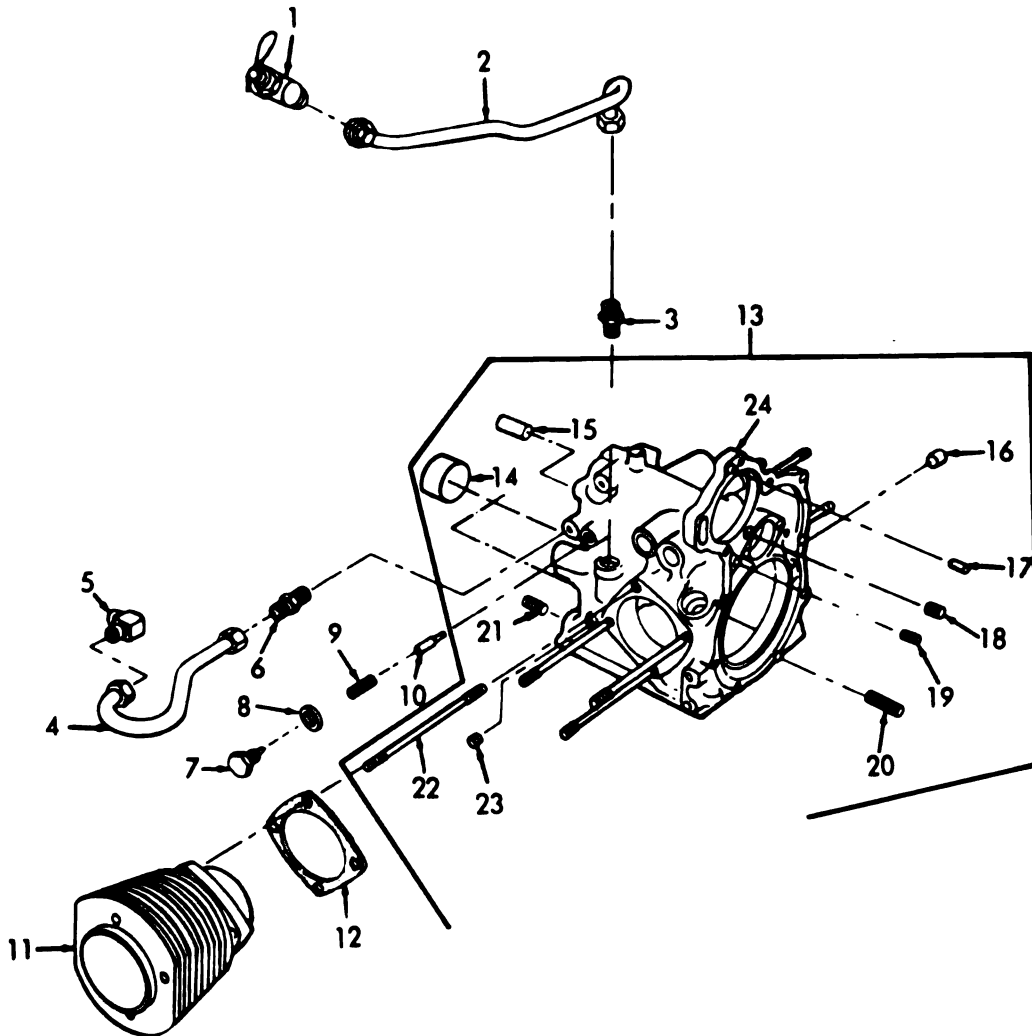


Figure No. 21 Crankcase Assembly

SECTION II

TM 5-2805-213-24P

(1) ILLUSTRATION		(2)	(3)	(4)	(5)	(6)	(7)	(8)
(a) FIG NO	(b) ITEM NO	SMR CODE	NATIONAL STOCK NUMBER	FBCM	PART NUMBER	DESCRIPTION	USABLE ON CODE	QTY INC IN UNIT
GROUP 21 CRANKCASE ASSEMBLY GROUP								
21	1	PA0ZZ		00000	10946803	VALVE ASSEMBLY, AIR INLET SHUTOFF.....	EA	1
21	2	PA0ZZ		00000	10941177	TUBE, BREATHER.....	EA	1
21	3	PA0ZZ	4820-00-921-6211	19207	10941303	VALVE, CHECK.....	EA	1
21	4	PA0ZZ	4710-00-921-6206	19207	10941269	TUBE, BENT, METALLIC.....	EA	1
21	5	PA0ZZ	4730-00-068-6616	96906	MS39171-5	ELBOW, PIPE.....	EA	1
21	6	PA0ZZ		96906	MS39169-5	ADAPTER, STRAIGHT.....	EA	1
21	7	XBOZZ	2990-00-921-6229	97403	13206E0728	PLUG, OIL PRESSURE.....	EA	1
21	8	PA0ZZ	5310-00-223-3318	88044	AN901-5C	WASHER, FLAT.....	EA	1
21	9	PA0ZZ	5360-00-017-8920	97403	13206E0141	SPRING, HELICAL, COMPRESSION.....	EA	1
21	10	PA0ZZ	2990-00-017-8924	97403	13206E0726	VALVE, OIL PRESSURE.....	EA	1
21	11	PAPZD	2805-00-017-8330	97403	13206E0631	CYLINDER, ENGINE, GAS.....	EA	1
21	12	KFFZZ		97403	13206E0634	GASKET, PART OF KIT P/N 5703462.....	EA	2
21	13	XBZZZ		97403	13215E3800	CRANKCASE ASSEMBLY.....	EA	1
21	14	PAHZZ	2990-00-017-8923	97403	13206E0534	.BEARING.....	EA	1
21	15	PAPZZ	2805-00-073-3035	97403	13206E0536	.SHAPT, STRAIGHT.....	EA	1
21	16	PAPZZ	4730-00-954-1281	96906	MS49005-4	.PLUG, PIPE.....	EA	3
21	17	XBPZZ		96906	MS16555-47	.PIN, STRAIGHT.....	EA	1
21	18	PAPZZ	4730-00-018-9566	96906	MS49005-2	.PLUG, PIPE.....	EA	2
21	19	PAPZZ	4730-00-985-4139	96906	MS49005-1	.PLUG, PIPE.....	EA	4
21	20	XBPZZ	5340-00-073-3012	97403	13206E0535	.INSERT, SCREW, THREADED, 1/4-20 X 5/16.....	EA	1
21	21	PAPZZ	5340-00-888-4807	96906	MS35914-113	.INSERT, SCREW, THREADED, 3/8-16 X 11/16.....	EA	4
21	22	PAPZZ	5307-00-017-8326	97403	13206E0547	.STUD, STEPPED.....	EA	8
21	23	XBPZZ	4730-00-954-1281	96906	MS49005-4	.PLUG, PIPE.....	EA	2
21	24	XAHZZ		97403	13206E0531	.CRANKCASE.....	EA	1
21	17	PAPZZ	2805-00-871-8370	19207	5703462	PARTS KIT, GASOLINE, GASKET OVERHAUL.....	EA	1
2	21					GASKET	EA	1
2	13					GASKET	EA	1
3	2					GASKET	EA	1
5	6					GASKET	EA	1
5	16					GASKET	EA	1
5	15					GASKET	EA	1
6	41					O' RING	EA	1
9	5					GASKET	EA	1
13	3					GASKET	EA	1
15	15					GASKET	EA	2
15	33					GASKET	EA	2
15	13					PACKING, PREFORMED	EA	4
16	19					PACKING, PREFORMED	EA	8
16	6					GASKET	EA	1
16	9					GASKET	EA	1
18	14					GASKET	EA	1
18	15					GASKET	EA	1
18	9					GASKET HOURMETER	EA	1
19	9					SEAL, OIL	EA	1
19	16					SEAL, PLAIN, ENCASED	EA	1
20	12					GASKET	EA	1
21						GASKET	EA	2

STOCK NUMBER	FIGURE NO.	ITEM NO.	STOCK NUMBER	FIGURE NO.	ITEM NO.
5305-00-011-3998	1	7	5306-00-226-4823	16	3
5307-00-017-8326	21	22	5306-00-226-4834	6	4
5310-00-017-8328	20	2	4730-00-231-3905	1	1
2805-00-017-8330	21	11	5315-00-234-1854	4	24
2990-00-017-8422	15	16	5330-00-251-2117	4	23
2530-00-017-8674	20	7	5305-00-269-3217	4	13
5365-00-017-8676	20	24	5305-00-269-3219	4	9
5360-00-017-8678	8	5	4730-00-277-8273	1	12
2520-00-017-8679	16	9	4730-00-277-8641	3	6
2520-00-017-8683	16	8	5305-00-286-1497	3	8
5330-00-017-8771	2	21	5310-00-298-2747	6	1
2990-00-017-8774	8	12	2910-00-374-3580	1	4
5330-00-017-8776	8	4	5365-00-374-9707	17	8
5310-00-017-8919	13	8	5305-00-405-1694	15	1
5310-00-017-8919	13	11	5305-00-405-1694	20	23
5360-00-017-8920	21	9	5310-00-407-9566	10	2
2990-00-017-8921	20	9	5325-00-432-9796	12	2
2990-00-017-8921	21	14	2805-00-449-0436	3	2
5330-00-017-8923	20	18	2805-00-449-0436	12	11
2990-00-017-8924	21	10	2805-00-450-6583	12	17
5305-00-017-9085	1	15	2910-00-505-5201	1	2
5305-00-017-9085	18	3	5310-00-514-6674	5	8
2805-00-017-9092	20	4	5310-00-514-6674	5	14
4730-00-018-9566	6	7	5310-00-514-6674	7	2
4730-00-018-9566	9	3	5310-00-514-6674	9	9
4730-00-018-9566	9	6	5310-00-514-6674	16	4
4730-00-018-9566	18	5	4730-00-540-2616	1	11
4730-00-018-9566	21	18	5310-00-550-1130	2	14
5306-00-021-3912	13	9	2805-00-554-9818	17	9
5315-00-043-1789	20	11	3020-00-570-2904	3	14
5310-00-044-6477	8	3	3030-00-570-2919	7	13
5307-00-053-1053	15	26	5340-00-570-2931	4	2
5305-00-057-9610	3	1	5340-00-570-2931	7	4
4730-00-067-9801	4	6	6150-00-570-2938	4	3
5305-00-068-0500	12	9	6150-00-570-2943	4	4
5305-00-068-0500	16	10	2590-00-570-2970	2	8
5305-00-068-0501	5	10	4710-00-570-2973	1	13
5305-00-068-0502	7	1	2590-00-570-2974	1	9
5305-00-068-0502	13	1	2590-00-570-2987	19	1
5305-00-068-0514	7	8	2590-00-570-2992	16	14
4730-00-068-6616	19	2	2590-00-570-2998	13	6
4730-00-068-6616	21	5	2590-00-570-2998	13	14
5340-00-073-3012	21	20	2590-00-570-3012	16	12
2805-00-073-3017	17	10	2805-00-570-3018	10	10
5306-00-073-3018	17	12	2805-00-570-3035	15	25
2805-00-073-3020	17	2	2805-00-570-3040	15	24
2805-00-073-3021	15	29	2805-00-570-3042	17	15
2805-00-073-3024	15	31	2910-00-570-3045	2	20
2805-00-073-3026	15	13	2920-00-570-3057	9	1
2805-00-073-3027	15	32	2920-00-570-3061	4	14
3120-00-073-3030	20	25	2990-00-570-3076	2	4
2805-00-073-3035	21	15	2520-00-570-3078	10	3
5330-00-073-3036	6	9	2990-00-570-3080	3	12
5310-00-073-3048	15	18	3120-00-570-3203	2	5
5310-00-080-6004	4	10	5330-00-570-3219	18	14
5310-00-080-6004	19	4	3120-00-570-3233	10	7
5305-00-087-0259	2	3	5310-00-576-5752	2	2
6645-00-089-8842	11	1	5310-00-576-5752	3	4
2990-00-133-9865	9	33	2940-00-580-6302	6	12
5310-00-167-0836	2	19	5315-00-616-5515	20	19
5325-00-174-9038	1	10	5305-00-616-6013	4	20
5310-00-184-9562	13	10	3120-00-618-2882	8	8
5310-00-209-0786	3	9			
5310-00-209-0786	5	11	5310-00-627-6128	8	11
5310-00-209-0786	7	16	5307-00-637-9960	14	9
5310-00-209-0786	12	10	5307-00-637-9970	19	7
5310-00-209-0786	13	2	5310-00-660-3381	2	18
5310-00-209-0786	14	3	5315-00-687-4571	9	19
5310-00-209-0786	16	6	2520-00-697-3831	10	4
5310-00-209-0786	16	11	5310-00-726-7690	20	6
5310-00-209-0786	16	17	5310-00-732-0558	4	12
5310-00-209-3671	15	17	5310-00-737-2632	4	25
5310-00-221-3153	4	21	5305-00-751-8655	4	16
5310-00-223-3318	21	8	5330-00-752-7750	6	5
5305-00-225-3839	7	15	5330-00-756-1673	1	17
5305-00-225-3839	16	5	2805-00-758-6646	15	2
5305-00-225-3839	16	16	5310-00-763-8905	7	20
5306-00-225-8497	5	13	2940-00-781-4307	6	6
5306-00-225-8499	9	8	2805-00-784-3686	20	20
5306-00-225-8500	7	18	5310-00-789-0961	6	10
5306-00-225-9084	5	9	5315-00-804-0538	9	21

NATIONAL STOCK NUMBER AND PART NUMBER INDEX

STOCK NUMBER	FIGURE NO.	ITEM NO.	STOCK NUMBER	FIGURE NO.	ITEM NO.
5315-00-804-0538	9	25	2990-00-921-6183	9	34
5365-00-804-2189	15	7	2990-00-921-6184	9	35
5310-00-809-4058	6	2	3020-00-921-6185	9	36
5310-00-809-4058	7	7	3020-00-921-6186	9	26
5310-00-809-4058	7	17	3020-00-921-6187	9	22
2920-00-810-7083	4	1	2990-00-921-6189	9	15
2910-00-832-5676	2	16	5360-00-921-6192	9	4
2910-00-832-5678	2	12	2990-00-921-6193	9	23
4710-00-832-5679	2	11	3020-00-921-6194	10	11
6645-00-832-5680	18	13	2805-00-921-6195	8	6
5340-00-832-5682	13	3	4730-00-921-6197	18	2
6680-00-832-5683	5	1	5315-00-921-6198	9	32
5340-00-832-7104	13	7	5360-00-921-6200	5	4
5365-00-838-0422	12	3	4730-00-921-6203	2	9
5315-00-844-3663	7	14	4710-00-921-6204	9	2
2805-00-851-6783	15	14	4710-00-921-6206	21	4
5305-00-857-5867	3	3	2990-00-921-6210	13	4
2805-00-867-8743	20	8	4820-00-921-6211	21	3
5310-00-867-8747	20	5	4730-00-921-6213	14	4
3120-00-867-8754	17	14	4820-00-921-6217	18	1
2805-00-867-8757	15	9	2805-00-921-6221	18	12
5310-00-867-8802	15	8	2805-00-921-6222	18	11
2940-00-867-8806	6	3	5330-00-921-6224	16	2
5360-00-867-8807	6	11	2990-00-921-6229	21	7
5365-00-867-8808	6	8	2805-00-922-6351	15	23
3020-00-868-0889	20	22	2805-00-922-7734	15	21
2990-00-871-8365	9		2805-00-925-0106	17	1
2920-00-871-8366	4		3120-00-925-8007	15	5
2805-00-871-8370	21		5360-00-926-1768	15	22
5310-00-880-7746	5	7	2805-00-930-6244	15	12
5340-00-888-4807	21	21	5310-00-934-9751	2	1
5305-00-889-3000	11	3	5310-00-934-9751	2	6
5365-00-898-2081	16	1	5310-00-939-0783	8	10
5310-00-903-8282	7	6	5305-00-945-9593	19	3
4730-00-909-8627	2	10	4730-00-954-1281	21	16
4730-00-909-8627	14	1	4730-00-954-1281	21	23
5305-00-912-5113	8	2	2805-00-973-0944	15	19
2805-00-913-9751	15	20	5305-00-978-9379	2	13
5310-00-917-6624	17	11	4730-00-985-4139	19	6
2990-00-921-6177	8	15	4730-00-985-4139	21	19
2930-00-921-6179	8	13	5315-00-989-2342	20	12
3040-00-921-6181	9	38	2920-00-999-6887	4	26
			2910-01-127-7368	1	16

FSCM	PART NUMBER	FIGURE NO.	ITEM NO.	FSCM	PART NUMBER	FIGURE NO.	ITEM NO.
88044	AN126018	19	7	96906	MS13962-1	17	8
88044	AN126294	14	9	96906	MS13969-1	17	13
88044	AN901-5C	21	8	96906	MS13996-1	17	9
88044	AN915-1	1	1	96906	MS16555-47	21	17
88044	AN960-516L	2	19	96906	MS16624-100	9	37
19207	BCYX5-1425315	18	7	96906	MS16624-3062	15	7
00000	BEBX1-131016	7	21	96906	MS16625-131	9	29
24617	BEBX1-3446477	8	3	96906	MS16631-1212	10	5
00000	BFDX4-1505581	5	3	96906	MS16631-1262	9	27
00000	BGKX1-589689	20	26	96906	MS172285	20	6
00000	BQUX1-583871	2	7	96906	MS17300-061	15	26
00000	BQUX1-583871	20	1	96906	MS20066-183	20	12
00000	BQUX1-583871	20	13	96906	MS20364-524	2	18
21450	BQUX1-583871	3	8	96906	MS20470A95-4	12	4
82796	B5969	4	21	96906	MS20500-428	6	1
00000	CAAX85-713376	9	39	96906	MS21083N12	8	10
19207	CAAX85-713393	9	11	96906	MS21083N4	7	6
00000	CAAX85-713430	9	20	96906	MS21336-2	18	5
00000	CAAX85-713430	9	30	96906	MS24641-34	3	1
24617	CF22	1	3	96906	MS24641-5	12	7
24617	CF23	1	4	96906	MS24641-62	1	7
00000	CMDX2-3573030	1	8	96906	MS24665-53	4	24
19207	CNEX2-137403	3	7	96906	MS27183-10	6	2
97403	CNEX4-127829	1	14	96906	MS27183-10	7	7
19207	CNEX4-137419	3	6	96906	MS27183-10	7	17
12204	CNEX4-137421	1	12	96906	MS27183-14	4	10
59875	FRC45	15	20	96906	MS27183-14	19	4
77260	GCS-3	3	12	96906	MS35206-230	11	3
70040	GF109	1	6	96906	MS35308-334	13	9
73134	HPJ3	2	5	96906	MS35333-22	3	4
96906	MS13836-1	17	14	96906	MS35333-23	2	14
96906	MS13929-1	17	7	96906	MS35333-39	2	2
96906	MS13931-1	17	6	96906	MS35335-19	3	9
96906	MS13932-1	17	5	96906	MS35335-19	20	14
96906	MS13933-1	17	4	96906	MS35335-33	5	11

NATIONAL STOCK NUMBER AND PART NUMBER INDEX

TM 5-2805-213-24P

FSCM	PART NUMBER	FIGURE ITEM		FSCM	PART NUMBER	FIGURE ITEM	
		NO.	NO.			NO.	NO.
96906	MS35335-33	7	16	52167	TENSILOCK	15	16
96906	MS35335-33	12	10	82796	U2498	4	19
96906	MS35335-33	13	2	82796	VX2433	4	17
96906	MS35335-33	14	3	19207	YALX9-21113640	8	14
96906	MS35335-33	16	6	82796	10S12NB	4	15
96906	MS35335-33	16	11	70040	106	1	5
96906	MS35335-33	16	17	19207	10900482	8	8
96906	MS35335-34	5	8	19207	10919358	10	10
96906	MS35335-34	5	14	00000	10919360	8	1
96906	MS35335-34	7	2	00000	10919361	8	18
96906	MS35335-34	9	9	19207	10919362	8	15
96906	MS35335-34	16	4	19207	10919366	7	19
96906	MS35335-35	8	11	19207	10919366	8	16
96906	MS35335-62	13	10	00000	10919367	7	22
96906	MS35337-26	10	2	19207	10919369	8	13
96906	MS35338-46	4	11	19207	10919370	8	17
96906	MS35457-34	2	13	19207	10919377	8	5
96906	MS35489-20	1	10	00000	10919379	7	3
96906	MS35490-20	12	15	00000	10919384	16	13
96906	MS35650-102	2	6	19207	10919386	16	12
96906	MS35650-302	2	1	19207	10919390	16	8
96906	MS35690-1022	7	20	19207	10919391	16	9
96906	MS35690-525	5	7	00000	10919392	16	7
96906	MS35690-602	4	12	97403	10919411	12	5
96906	MS35756-38	20	11	00000	10919413	10	8
96906	MS35756-5	20	19	02978	10919414	10	7
96906	MS35769-4	6	9	00000	10919415	10	6
96906	MS35802-1	6	12	00000	10919416	10	12
96906	MS35802	6	13	00000	10919417	9	14
96906	MS35842-13	2	10	00000	10919418	19	8
96906	MS35842-13	14	1	19207	10919435	13	6
96906	MS35844-83	16	1	19207	10919435	13	14
96906	MS35914-113	21	21	00000	10919436	19	5
96906	MS39169-5	16	15	00000	10919449	14	8
96906	MS39169-5	21	6	00000	10919452	13	13
96906	MS39171-1	4	8	00000	10919453	13	12
96906	MS39171-5	19	2	19207	10919460	2	15
96906	MS39171-5	21	5	19207	10919461	2	21
96906	MS39176-1	4	6	19207	10919462	16	14
96906	MS39177-1	4	7	19207	10919463	19	1
96906	MS49005-1	19	6	00000	10919466	12	16
96906	MS49005-1	21	19	00000	10919469	12	14
96906	MS49005-2	6	7	97403	10919470	12	12
96906	MS49005-2	9	3	00000	10919471	12	13
96906	MS49005-2	9	6	97403	10919472	12	17
96906	MS49005-2	21	18	19207	10919473	12	8
96906	MS49005-4	21	16	19207	10941100	9	1
96906	MS49005-4	21	23	00000	10941101	9	40
96906	MS51009-3	4	1	00000	10941102	9	24
96906	MS51096-359	8	2	19207	10941103	9	38
96906	MS9021-037	9	7	19207	10941105	9	34
96906	MS9048-105	9	21	19207	10941106	9	35
96906	MS9048-105	9	25	19207	10941107	9	36
96906	MS9048-107	9	19	00000	10941108	9	28
96906	MS9048-230	7	14	00000	10941109	9	31
96906	MS9068-111	15	15	19207	10941110	9	26
96906	MS9068-211	15	33	00000	10941111	9	16
96906	MS90725-29	16	3	19207	10941112	9	22
96906	MS90725-3	12	9	19207	10941113	9	18
96906	MS90725-3	16	10	19207	10941116	9	15
96906	MS90725-32	5	13	00000	10941117	9	17
96906	MS90725-34	9	8	19207	10941118	9	13
96906	MS90725-35	7	18	00000	10941119	9	12
96906	MS90725-41	6	4	00000	10941120	9	5
96906	MS90725-5	5	10	19207	10941121	9	4
96906	MS90725-6	7	1	19207	10941122	9	23
96906	MS90725-6	13	1	19207	10941125	10	11
96906	MS90725-67	4	13	00000	10941129	9	10
96906	MS90725-69	4	9	19207	10941134	8	12
96906	MS90725-8	7	15	19207	10941135	8	9
96906	MS90725-8	16	5	19207	10941136	8	6
96906	MS90725-8	16	16	19207	10941137	8	4
96906	MS90726-29	5	9	19207	10941146	2	4
96906	MS90726-7	7	8	19207	10941150	10	3
96906	MS9122-03	3	3	00000	10941163	20	17
96906	MS9122-05	2	3	19207	10941165	2	20
82796	M2570	4	25	00000	10941166	2	17
82796	P2473	4	18	02978	10941169-1	4	3
82796	Q2437A	4	22	19207	10941169-2	4	4
82796	SK94	4		19207	10941175	1	13
77220	T-1711	15	23	97403	10941176	2	8

NATIONAL STOCK NUMBER AND PART NUMBER INDEX

FSCM	PART NUMBER	FIGURE ITEM		FSCM	PART NUMBER	FIGURE ITEM	
		NO.	NO.			NO.	NO.
00000	10941177	21	2	97403	13206E0621	20	10
19207	10941179	18	2	97403	13206E0626	20	7
19207	10941180-1	9	32	97403	13206E0631	21	11
19207	10941182	3	2	97403	13206E0634	21	12
19207	10941182	12	11	97403	13206E0641	17	15
19207	10941183	15	25	97403	13206E0643	17	3
19207	10941184	15	24	97403	13206E0650	17	10
97403	10941185	17	1	97403	13206E0653	17	12
00000	01941187	18	8	97403	13206E0667	15	31
00000	10941188	15	6	97403	13206E0668	15	32
00000	10941192	16	18	97403	13206E0669	15	21
19207	10941193	5	4	97403	13206E0670	15	27
00000	10941204	5	12	97403	13206E0671	15	30
00000	10941218	5	5	97403	13206E0675	15	29
00000	10941220	18	4	97403	13206E0676	15	28
19207	10941221	9	41	97403	13206E0679	15	22
00000	10941222	4	5	97403	13206E0680-1	15	13
97403	10941223	7	5	97403	13206E0686	15	2
00000	10941224	7	10	97403	13206E0700	15	9
97403	10941225	7	12	97403	13206E0701	15	11
00000	10941229	5	6	97403	13206E0703	15	10
19207	10941230	12	1	97403	13206E0715	20	18
00000	10941231	7	11	97403	13206E0716	20	22
19207	10941233	7	9	97403	13206E0717	20	16
00000	10941236-1	3	10	97403	13206E0718	20	15
00000	10941236-2	3	11	97403	13206E0726	21	10
19207	10941239	2	9	97403	13206E0728	21	7
97403	10941241	4	14	97403	13206E0733	16	19
00000	10941245	5	15	97403	13206E0792	3	14
19207	10941249	9	2	97403	13206E0864	14	7
19207	10941253	5	1	97403	13206E0900	4	26
19207	10941260	5	2	97403	13206E0930	20	5
19207	10941269	21	4	97403	13206E0964	15	18
19207	10941285	13	4	97403	13206E629	20	3
19207	10941294	3	5	97403	13206E685	15	3
97403	10941295	12	6	97403	13206E8571	20	21
19207	10941302	14	5	97403	13208E5776	12	3
19207	10941303	21	3	97403	13208E5845	12	2
19207	10941305	14	4	97403	13213E3266	10	9
97403	10941311	1	9	97403	13213E3283	16	2
19207	10941316	18	1	97403	13213E3294	15	8
00000	10946803	21	1	97403	13213E3295	15	17
19207	10946807	7	13	97403	13213E3300	15	12
00000	10946958-3	5	16	97403	13213E3301	15	14
00000	10946958-4	16	20	97403	13213E3302	15	5
19207	10947213-1	1	15	97403	13214E8207	17	2
19207	10947213-1	18	3	97403	13214E8208	15	19
19207	10947213-2	15	1	97403	13214E8578-1	15	4
19207	10947213-2	20	23	97403	13214E9578-1	17	11
19207	10947213-4	14	2	97403	13215E3682	11	2
19207	10947213-5	18	10	97403	13215E3683	11	4
97403	13206E0141	21	9	97403	13215E3684	11	6
97403	13206E0160	6	3	97403	13215E3685	11	5
97403	13206E0165	6	11	97403	13215E3686	11	1
97403	13206E0166	6	10	97403	13215E3687	18	13
97403	13206E0167	6	9	97403	13215E3705	9	33
97403	13206E0168	6	8	97403	13215E3756	2	11
97403	13206E0171	6	14	97403	13215E3757	2	16
97403	13206E0177	6	15	97403	13215E3758	2	12
97403	13206E0184	3	13	97403	13215E3759-1	13	7
97403	13206E0401	1	17	97403	13215E3759-2	13	3
97403	13206E0531	21	24	97403	13215E3800	21	13
97403	13206E0534	20	9	97403	13215E3801	1	2
97403	13206E0534	21	14	97403	13215E4150	1	16
97403	13206E0535	21	20	97403	13215E4166	4	23
97403	13206E0536	21	15	97403	13215E4168	6	6
97403	13206E0545	19	9	24617	137405	1	11
97403	13206E0547	21	22	71838	4005	13	8
97403	13206E0573	20	25	19207	5703460	9	
97403	13206E0574	20	24	19207	5703462	21	
97403	13206E0580	20	20	82796	6S6U	4	20
97403	13206E0582	18	6	19207	7023596	10	1
97403	13206E0593	18	15	19207	7966621	10	4
97403	13206E0599	18	14	82796	8S5U	4	16
97403	13206E0604	18	12	19207	8738121	8	7
97403	13206E0605	18	11	19207	8738123	4	2
97403	13206E0607	18	9	19207	8738123	7	4
97403	13206E0611	20	4	19207	87433903-3	19	3
97403	13206E0613	20	2	97403	9786E50-1	13	11
97403	13206E0620	20	8	97403	9786E50-2	13	5
				97403	9786E50-2	14	6

By Order of the Secretary of the Army:

JOHN A. WICKHAM, JR.
General, United States Army
Chief of Staff

Official:

ROBERT M. JOYCE
Major General, United States Army
The Adjutant General

DISTRIBUTION:

To be distributed in accordance with DA Form 12-25A, Organizational Maintenance Requirements for Engine Gasoline, 14HP MIL STD.

FILL IN YOUR
UNIT'S ADDRESS

FOLD BACK

DEPARTMENT OF THE ARMY

OFFICIAL BUSINESS

COMMANDER
U S ARMY SUPPORT AND AVIATION MATERIEL READINESS COMMAND
ATTN: DRSTS-MPSD
4300 GOODFELLOW BOULEVARD
ST. LOUIS, MO 63120

TEAR ALONG PERFORATED LINE

FILL IN YOUR
UNIT'S ADDRESS

FOLD BACK

DEPARTMENT OF THE ARMY

OFFICIAL BUSINESS

COMMANDER
U S ARMY SUPPORT AND AVIATION MATERIEL READINESS COMMAND
ATTN: DRSTS-MPSD
4300 GOODFELLOW BOULEVARD
ST. LOUIS, MO 63120

TEAR ALONG PERFORATED LINE

The Metric System and Equivalents

Linear Measure

1 centimeter = 10 millimeters = .39 inch
 1 decimeter = 10 centimeters = 3.94 inches
 1 meter = 10 decimeters = 39.37 inches
 1 dekameter = 10 meters = 32.8 feet
 1 hectometer = 10 dekameters = 328.08 feet
 1 kilometer = 10 hectometers = 3,280.8 feet

Weights

1 centigram = 10 milligrams = .15 grain
 1 decigram = 10 centigrams = 1.54 grains
 1 gram = 10 decigrams = .035 ounce
 1 dekagram = 10 grams = .35 ounce
 1 hectogram = 10 dekagrams = 3.52 ounces
 1 kilogram = 10 hectograms = 2.2 pounds
 1 quintal = 100 kilograms = 220.46 pounds
 1 metric ton = 10 quintals = 1.1 short tons

Liquid Measure

1 centiliter = 10 milliliters = .34 fl. ounce
 1 deciliter = 10 centiliters = 3.38 fl. ounces
 1 liter = 10 deciliters = 33.81 fl. ounces
 1 dekaliter = 10 liters = 2.64 gallons
 1 hectoliter = 10 dekaliters = 26.42 gallons
 1 kiloliter = 10 hectoliters = 264.18 gallons

Square Measure

1 sq. centimeter = 100 sq. millimeters = .155 sq. inch
 1 sq. decimeter = 100 sq. centimeters = 15.5 sq. inches
 1 sq. meter (centare) = 100 sq. decimeters = 10.76 sq. feet
 1 sq. dekameter (are) = 100 sq. meters = 1,076.4 sq. feet
 1 sq. hectometer (hectare) = 100 sq. dekameters = 2.47 acres
 1 sq. kilometer = 100 sq. hectometers = .386 sq. mile

Cubic Measure

1 cu. centimeter = 1000 cu. millimeters = .06 cu. inch
 1 cu. decimeter = 1000 cu. centimeters = 61.02 cu. inches
 1 cu. meter = 1000 cu. decimeters = 35.31 cu. feet

Approximate Conversion Factors

To change	To	Multiply by	To change	To	Multiply by
inches	centimeters	2.540	ounce-inches	newton-meters	.007062
feet	meters	.305	centimeters	inches	.394
yards	meters	.914	meters	feet	3.280
miles	kilometers	1.609	meters	yards	1.094
square inches	square centimeters	6.451	kilometers	miles	.621
square feet	square meters	.093	square centimeters	square inches	.155
square yards	square meters	.836	square meters	square feet	10.764
square miles	square kilometers	2.590	square meters	square yards	1.196
acres	square hectometers	.405	square kilometers	square miles	.386
cubic feet	cubic meters	.028	square hectometers	acres	2.471
cubic yards	cubic meters	.765	square kilometers	cubic feet	35.315
fluid ounces	milliliters	29.573	cubic meters	cubic yards	1.308
pints	liters	.473	milliliters	fluid ounces	.034
quarts	liters	.946	liters	pints	2.113
gallons	liters	3.785	liters	quarts	1.057
ounces	grams	28.349	liters	gallons	.264
pounds	kilograms	.454	grams	ounces	.035
short tons	metric tons	.907	kilograms	pounds	2.205
pound-feet	newton-meters	1.356	metric tons	short tons	1.102
pound-inches	newton-meters	.11296			

Temperature (Exact)

°F Fahrenheit temperature 5/9 (after subtracting 32) Celsius temperature °C



